

4		3				2		1	
P/N	Ø A	Ø B	C	D	Ø E	REVISIONS			
-2CC	.0200±.0005	.550	.400	.187±.003	.103±.003	REV	DESCRIPTION	DATE	BY
-2CCSF						A	ECO 19455	08.07.06	P.MAO
-2CCNP						B	ECO 202352 (ADD NEW NAME)	11.21.24	DKN
-3CC	.0100±.0005	.550	.400	.187±.003	.103±.003				
-3CCSF									
-3CCNP									
-4CC	.0120±.0005	.550	.400	.187±.003	.103±.003				
-4CCSF									
-4CCNP									
-5CC	.0150±.0005	.550	.400	.187±.003	.103±.003				
-5CCSF									
-5CCNP									
-6CC	.0180±.0005	.550	.400	.187±.003	.103±.003				
-6CCSF									
-6CCNP									
-7CC	.0200±.0005	.480	.346	.173±.003	.070±.003				
-7CCSF									
-7CCNP									

MATERIAL:	ELECTRICAL:	MECHANICAL:	ENVIRONMENTAL:
Body: SST 303 per ASTM A-582. Center Conductor: BeCu alloy per ASTM B-196. Insulator: PTFE per ASTM D-1710.	Impedance: 50 Ohms nominal. Frequency Range: DC to 26.0 GHz. VSWR: 1.06 + .005 x f(GHz). Insertion Loss: .03 √f(GHz). Working Voltage: 335 Vrms max @ sea level. Dielectric Withstanding Voltage: 1000 Vrms min. R.F. HiPot Voltage: 670 Vrms min @ 5MHz. Corona Level: 250 Vrms @ 70,000 ft. Insulation Resistance: 5000 MegOhms min. R.F. Leakage: -(90 - fGHz). Contact Resistance: Initial: Center Contact: 3.0 Milliohm max. Outer Contact: 2.0 Milliohm max. After Environment: Center Contact: 4.0 Milliohm max. Outer Contact: NA.	Mating Characteristics: Interface per Mil-Std-348. Force To Engage & Disengage: Torque: 2 inch-pounds max. Longitudinal Force: NA. Center Contact Retention: Axial Force: 6 pounds min. Connector Durability: 500 cycles min @ 12 cycles/minute max. Permeability: Less than 2.0 mu. Center Contact Captivation: Axial Force from Interface: 6 pounds min. Axial Force from Rear End: 3 pounds min. Torque: 4 inch-ounces min.	Temperature Range: -65°C to +165°C. Thermal Shock: Mil-Std-202, Method 107, Test Cond. B. Moisture Resistance: Mil-Std-202, Method 106, except step 7b shall be omitted. Insulation resistance at least 1000 MegOhms within 5 minutes after removal from humidity. Corrosion: Mil-Std-202, Method 101, Test Cond. B. Vibration: Mil-Std-202, Method 204, Test Cond. D. Shock: Mil-Std-202, Method 213, Test Cond. I.

FINISH:
Body (for CCSF): Passivate per ASTM A-967. Body (for CC): Gold plate per ASTM B-488, over nickel under plate per AMS-QQ-N-290. Body (for CCNP): Nickel plate per AMS-QQ-N-290. Center Conductor: Gold plate per ASTM B-488, over nickel under plate per AMS-QQ-N-290.

APPLICABLE Amphenol CDI DOCUMENTS		
WORK STD	PROD INST	ASSY INST
NA	NA	NA
<b>NOTICE</b>		
<small>THIS DRAWING EMBODIES A CONFIDENTIAL PROPRIETARY DESIGN ORIGINATED BY Amphenol CDI AND ALL DESIGN, MANUFACTURING, RE-PRODUCTION, USE AND SALE RIGHTS REGARDING THE SAME ARE EXPRESSLY RESERVED. IF IS SUBMITTED UNDER A CONFIDENTIAL RELATIONSHIP FOR A SPECIFIED PURPOSE AND THE RECIPIENT AGREES BY ACCEPTING THIS DRAWING NOT TO SUPPLY OR DISCLOSE ANY INFORMATION REGARDING IT TO ANY UNAUTHORIZED PERSON TO INCORPORATE INTO OTHER PRODUCTS ANY SPECIAL FEATURE REGULAR TO THIS DESIGN. ALL PATENT RIGHTS HERETO ARE EXPRESSLY RESERVED BY Amphenol CDI, Cerritos, CA 90703</small>		

TOLERANCES AND NOTES EXCEPT AS NOTED		MATERIAL		SPECIFICATION		PROCUREMENT	
<small>INTERPRET DRAWING PER ASME Y14.5-2018            DIMENSIONS ARE IN INCHES:            LINEAR .XXX ±.015            .XXX ±.005 ANGULAR ± 1/2°            FRACTION ± 1/32</small>							
1. MACHINE FINISH: 63/RMS 2. BREAK ALL SHARP EDGES .005 MAX. 3. MACHINED FILLETS .005 MAX. 4. MACHINED SURFACES SQUARE TO RESPECTIVE AXES WITHIN .005 INCHES PER INCH. 5. MACHINED DIAMETERS CONCENTRIC WITHIN .002 T.I.R. 6. DIMENSIONS TO BE MET BEFORE PLATING. 7. CHAMFER ALL THREADS 45°. 8. THREADS PER 1H-26. 9. REMOVE FRAYED EDGES ON TEFLON. 10. REMOVE ALL BURRS.		APPROVAL INITIALS DRAWN BY DKN 08.07.06 CHECKED BY PM 04.07.07 TEST ENGG QUALITY DESIGN ENGG PMAO 04.10.07 MFG ENGG ECO APPRV DNg 11.20.24	DATE 08.07.06 04.07.07	TITLE SMA FEMALE STRAIGHT 2 HOLE FLANGE MOUNT FIELD REPLACEABLE	12900 Alondra Blvd. Cerritos, CA 90703	SCALE 10:1	DIRECTORY\SUB-DIRECTORY _OUTLINE\ SHEET 1 of 2
SIZE C 30990		DRAWING NO. 5678		REV B			

4

3

2

1

D

D

C

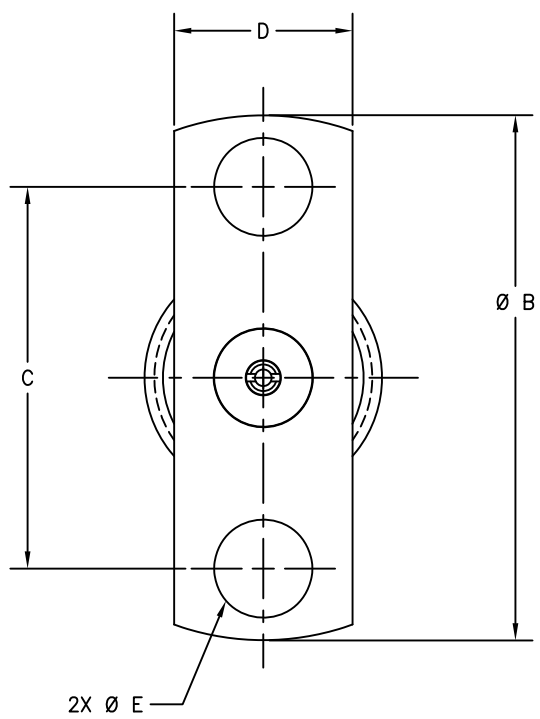
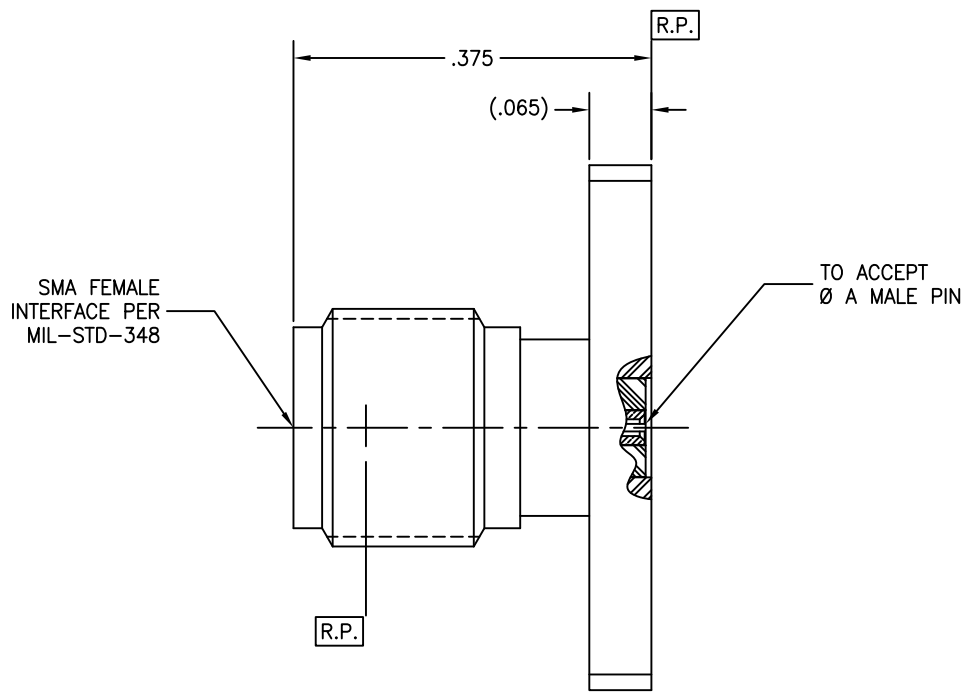
C

B

B

A

A



4

3

2

1

SCALE	DIRECTORY\SUB-DIRECTORY	SHEET 2 OF 2
10:1	_OUTLINE\	
SIZE	CAGE CODE	DRAWING NO.
C	30990	5678
		REV. B