

P/N	Ø A	CABLE TYPE(S)	FIGURE(S)
-1CC	(.057)	RD178	1
-2CC	(.090)	RD316	1
-3CC	(.075)	RD178	1
-4CC	(.100)	RD316	2
-5CC	OBSOLETE		
-6CC	OBSOLETE		
-7CC	OBSOLETE		
-8CC	OBSOLETE		
-9CC	(.090)	TLL18-1087	1
-10CC	OBSOLETE		
-11CC	(.122)	TLL40-1111A	3

REVISIONS			
REV	DESCRIPTION	DATE	BY
P	ECO 27629	02.11.14	DKN
R	ECO 31093	08.01.16	DKN
T	ECO 202352 (ADD NEW NAME)	11.24.25	DKN

CONFIGURATIONS SHOWN ON SHT 2

MATERIAL:	ELECTRICAL:	MECHANICAL:	ENVIRONMENTAL:
Body, Cap, & Anti Ring: BeCu alloy per ASTM B-196. Center Conductor: BeCu alloy per ASTM B-196. Dielectric: PTFE per ASTM D-1710. Shrink Tubing: Shrink tubing per MIL-DTL-23053/4.	Impedance: 50 Ohms nominal. Frequency Range: DC to 18.0 GHz. VSWR: 1.20:1 max to 18.0GHz Insertion Loss: .10 dB max to 18.0 GHz Working Voltage: 335 Vrms max @ sea level. Dielectric Withstanding Voltage: 500 Vrms min. R.F. HiPot Voltage: 325 Vrms min @ 5MHz. Corona Level: 190 Vrms @ 70,000 ft. Insulation Resistance: 5000 MegOhms min. Contact Resistance: Center Contact: 4.0 Milliohm max. Outer Contact: 2.0 Milliohm max. R.F. Leakage: -80 dB max to 3.0GHz -65 dB max to 18GHz	Mating Characteristics: Interface per Mil-Std-348. Force To Engage: Full Detent: 15 lbs max Limited Detent: 10 lbs max Smooth Bore: 2 lbs max Force To Disengage: Full Detent: 5 lbs min Limited Detent: 2 lbs min Smooth Bore: .5 lbs min Center Contact Insertion Force: 16 ounces max Center Contact Separation Force: 0.5 ounces min Connector Durability: Depend on Detent	Temperature Range: -65°C to +165°C. Thermal Shock: Mil-Std-202, Method 107, Test Cond. B. Moisture Resistance: Mil-Std-202, Method 106, except step 7b shall be omitted. Insulation resistance at least 1000 MegOhms within 5 minutes after removal from humidity. Corrosion: Mil-Std-202, Method 101, Test Cond. B. Vibration: Mil-Std-202, Method 204, Test Cond. D. Shock: Mil-Std-202, Method 213, Test Cond. I.

FINISH:	APPLICABLE Amphenol CDI DOCUMENTS	TOLERANCES AND NOTES EXCEPT AS NOTED	MATERIAL		SPECIFICATION		PROCUREMENT												
Body, Center Conductor, Cap, & Anti Ring: Gold plate per ASTM B-488, Type II, Code C or D; over nickel under plate per SAE-AMS-QQ-N-290, Class 1.	<table border="1"> <thead> <tr> <th>WORK STD</th> <th>PROD INST</th> <th>ASSY INST</th> </tr> </thead> <tbody> <tr> <td>NA</td> <td>NA</td> <td>NA</td> </tr> </tbody> </table>	WORK STD	PROD INST	ASSY INST	NA	NA	NA	INTERPRET DRAWING PER ASME Y14.5-2018 DIMENSIONS ARE IN INCHES: LINEAR .XX ±.015 ANGLULAR ± 1/2° .XXX ±.005 FRACTION ± 1/32 1. MACHINE FINISH: 32/RMS 2. BREAK ALL SHARP EDGES .003 MAX. 3. MACHINED FILLETS .005 MAX. 4. MACHINED SURFACES SQUARE TO RESPECTIVE AXES WITHIN .002 INCHES PER INCH. 5. MACHINED DIAMETERS CONCENTRIC WITHIN .002 TLR. 6. DIMENSIONS TO BE MET BEFORE PLATING. 7. CHAMFER ALL THREADS 45°. 8. THREADS PER H-29. 9. REMOVE FRAVED EDGES ON TEFLON. 10. REMOVE ALL BURRS.	<table border="1"> <thead> <tr> <th>APPROVAL INITIALS</th> <th>DATE</th> </tr> </thead> <tbody> <tr> <td>DKN</td> <td>08.18.06</td> </tr> </tbody> </table>	APPROVAL INITIALS	DATE	DKN	08.18.06	Amphenol CDI 12900 Alondra Blvd. Cerritos, CA 90703	TITLE SMP FEMALE RIGHT ANGLE TO FLEXIBLE CABLE		SCALE NONE	DIRECTORY\SUB-DIRECTORY _OUTLINE\	SHEET 1 of 2
WORK STD	PROD INST	ASSY INST																	
NA	NA	NA																	
APPROVAL INITIALS	DATE																		
DKN	08.18.06																		
			DESIGN ENGG MFG ENGG ECO APPRV	ATV Dng	09.03.99 11.25.24	SIZE C	CAGE CODE 30990	DRAWING NO. P600	REV. T										

NOTICE

THIS DRAWING EMBODIES A CONFIDENTIAL PROPRIETARY DESIGN ORIGINATED BY Amphenol CDI AND ALL DESIGN, MANUFACTURING, RE-PRODUCTION, USE AND SALE RIGHTS REGARDING THE SAME ARE EXPRESSLY RESERVED. IT IS SUBMITTED UNDER A CONFIDENTIAL RELATIONSHIP FOR A SPECIFIED PURPOSE AND THE RECIPIENT AGREES BY ACCEPTING THIS DRAWING NOT TO SUPPLY OR DISCLOSE ANY INFORMATION REGARDING IT TO ANY UNAUTHORIZED PERSON TO INCORPORATE IN OTHER PROJECTS ANY SPECIAL FEATURE REGULAR TO THIS DESIGN. ALL PATENT RIGHTS HERETO ARE EXPRESSLY RESERVED BY Amphenol CDI, Cerritos, CA 90703

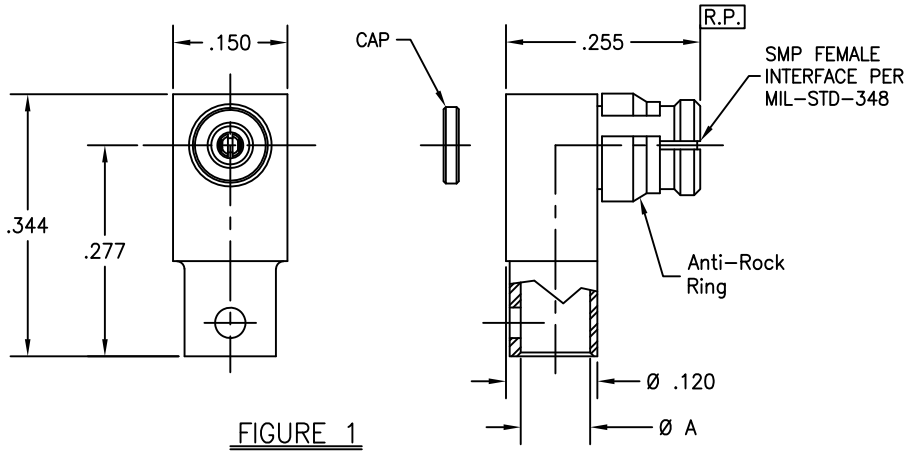


FIGURE 1

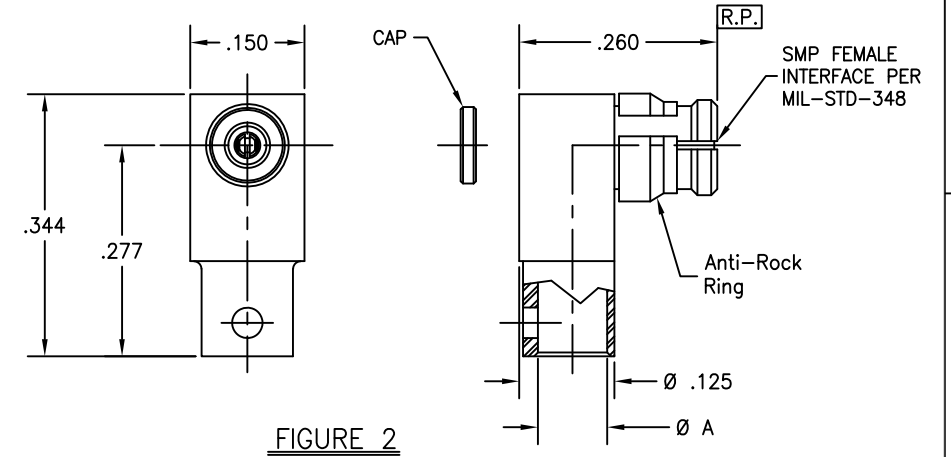


FIGURE 2

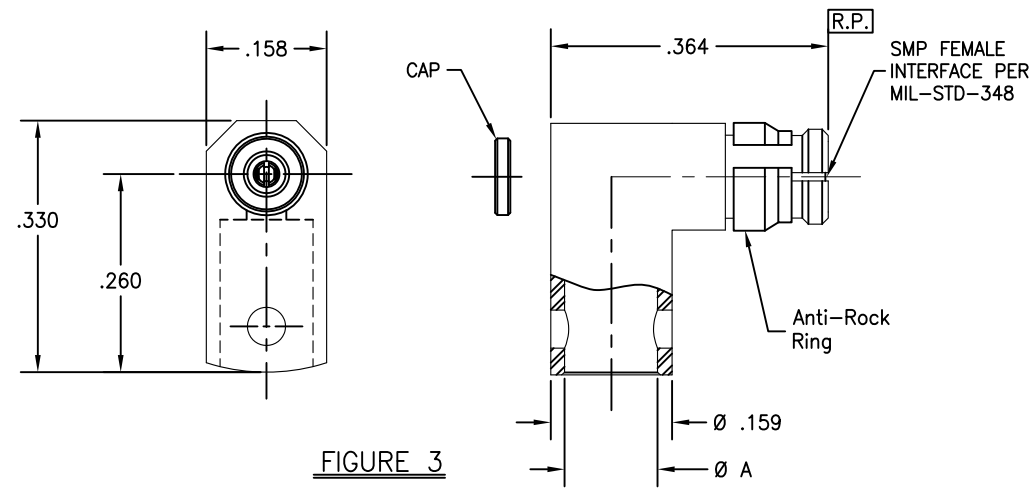


FIGURE 3

SCALE	DIRECTORY\SUB-DIRECTORY	SHEET 2 OF 2
8:1	_OUTLINE\	
SIZE	CAGE CODE	REV.
C	30990	T
DRAWING NO.		
P600		