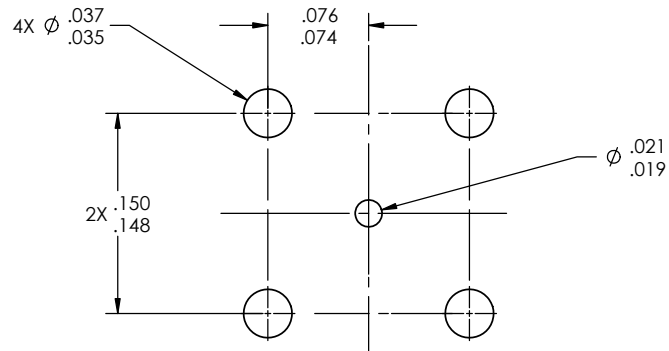
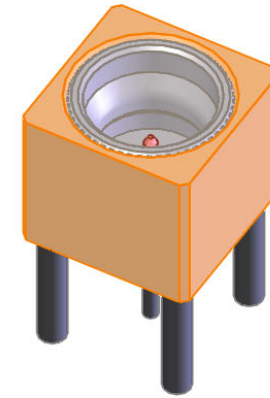
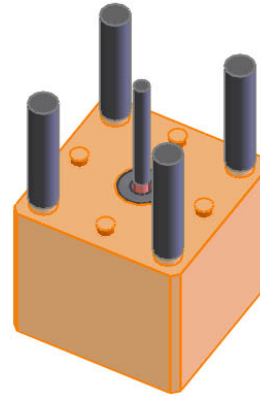


PART NO.	INTERFACE(S)	Ø A	FIGURE(S)
-1CC	FULL DETENT	.116±.001	1
-2CC	LIMITED DETENT	.120±.001	1
-3CC	SMOOTH BORE	.125±.001	1
-4CC	CATCHERS MITT	.125±.001	2

REVISIONS			
REV.	DESCRIPTION	DATE	BY
D	ECO 12856	03.02.01	HCB
E	ECO 20006 (REDRAW IN SW)	03.01.07	YP
F	ECO 202352 (ADD NEW NAME)	11.26.2024	DKN



RECOMMENDED MOUNTING HOLE PATTERN



MATERIAL:

Insert:
 303 sst per ASTM A-582
 Body & Center Conductor:
 BeCu alloy per ASTM B-196
 Insulator:
 PTFE per ASTM D-1710

ELECTRICAL:

Impedance: 50 Ohms Nom.
 Freq. Range: DC TO 12 GHz
 VSWR: 1.25:1 max to 12GHz
 Insertion Loss: .10 dB max to 12GHz
 Working Voltage: 335 Vrms @ Sea Level
 Dielectric Withstand Voltage: 500 Vrms min
 RF HiPot Voltage: 325 Vrms Min @ 5MHz
 Corona Level: 125 Vrms @ 70,000 ft
 Insulation Resistance: 5000 Mohms
 Contact Resistance:
 Center Conductor: 6.0 Milliohms max
 Outer Conductor: 2.0 Milliohms max
 RF Leakage: -80 dB max to 3GHz
 -65 dB max to 18GHz

MECHANICAL:

Interface Dimensions:
 Consult Factory
 Connector Durability:
 100 Cycles min - Full Detent
 500 Cycles min - Limited Detent
 1000 Cycles min - Catchers Mitt
 Center Contact Retention:
 2 lbs Min Axial
 N/A Radial
 Force to Engage:
 15 pounds max - Full Detent
 10 pounds max - Limited Detent
 2 pounds max - Catchers Mitt
 Force to Disengage:
 5 pounds min - Full Detent
 2 pounds min - Limited Detent
 .5 pounds min - Catchers Mitt
 Permeability: Less than 2.0 mu.

ENVIRONMENTAL:

Temp. Range: -65°C to +165°C
 Thermal Shock:
 MIL-STD-202, Method 107, Test Cond. B
 Moisture Resistance:
 MIL-STD-202, Method 106, except step 7b shall be omitted. Insulation resistance at least 100 MegaOhms within 5 minutes after removal from humidity.
 Corrosion:
 MIL-STD-202, Method 101, Test Cond. B
 Vibration:
 MIL-STD-202, Method 204, Test Cond. D
 Shock:
 MIL-STD-202, Method 213, Test Cond. I

FINISH:

Insert:
 Passivate per ASTM A-967.
 Body & Center Conductor:
 Gold plate per ASTM B-488, Type II, Code C or D, Class 1.25; over
 Nickle plate per SAE-AMS-QQ-N-290, cLASS 1.

APPLICABLE Amphenol CDI DOCUMENTS

WORK STANDARD	PROD INSTRUC	ASSY INSTRUC
NA	NA	NA

NOTICE
 THIS DRAWING EMBODIES A CONFIDENTIAL PROPRIETARY DESIGN ORIGINATED BY Amphenol CDI & ALL DESIGN, MANUFACTURING, REPRODUCTION, USE & SALE RIGHTS REGARDING THE SAME ARE EXPRESSLY RESERVED. IT IS SUBMITTED UNDER A CONFIDENTIAL RELATIONSHIP FOR A SPECIFIED PURPOSE & THE RECIPIENT AGREES BY ACCEPTING THIS DRAWING NOT SUPPLY OR DISCLOSE ANY INFORMATION REGARDING IT TO ANY UNAUTHORIZED PERSON TO INCORPORATE IN OTHER PROJECTS ANY SPECIAL FEATURES PECULIAR TO THIS DESIGN. ALL PATENT RIGHTS HERETO ARE EXPRESSLY RESERVED BY Amphenol CDI, CERRITOS, CALIFORNIA 94003.

TOLERANCES AND NOTES

- EXCEPT AS NOTED DIMENSIONS ARE IN INCHES.
 XX ±.015
 LINEAR XXX ±.005 ANGULAR ± 1/2°
 FRACTION ± 1/32
 INTERPRET DRAWING PER ASME Y14.5 - 2018
1. MACHINE FINISH: ✓ RMS
 2. BREAK ALL SHARP EDGES .003 MAX.
 3. MACHINED FILLETS .005 MAX.
 4. MACHINED SURFACES SQUARE TO RESPECTIVE AXES WITHIN .005 INCHES PER INCH.
 5. MACHINED DIAMETERS CONCENTRIC WITHIN .002 TLR.
 6. DIMENSIONS TO BE MET BEFORE PLATING.
 7. CHAMFER ALL THREADS 45°.
 8. THREADS PER H-28
 9. REMOVE FRAYED EDGES ON TEFLON.
 10. REMOVE ALL BURRS.

MATERIAL		SPECIFICATION		PROCUREMENT	
APPROVAL INITIALS	DATE	Amphenol 12900 Alondra Blvd. Cerritos, CA 94075 TITLE SMP MALE STRAIGHT PCB SURFACE MOUNT			
DRAWN BY	YPHAN				
CHECKED BY	-				
TEST ENGR	-				
QUALITY	-				
DESIGN ENG	DNg	SCALE	SUB-DIRECTORY/	SHEET 1 OF 2	
MFG. ENGR	-	SIZE	OUTLINE/	DRAWING NO.	
ECO APPRV	DNg	11.26.24	C	30990	P603

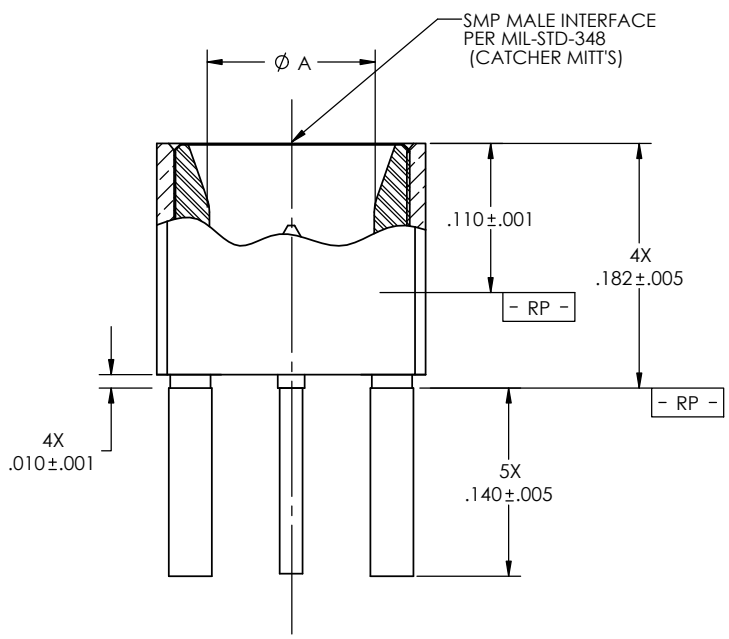


FIGURE 2

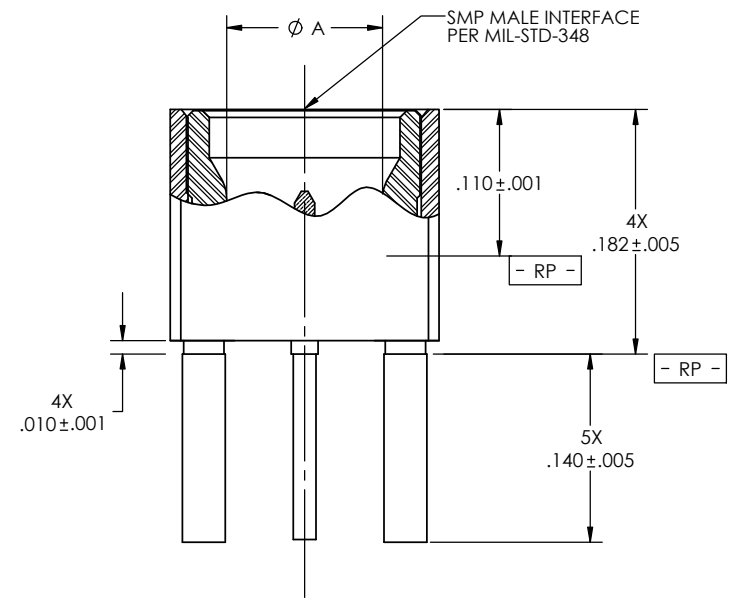
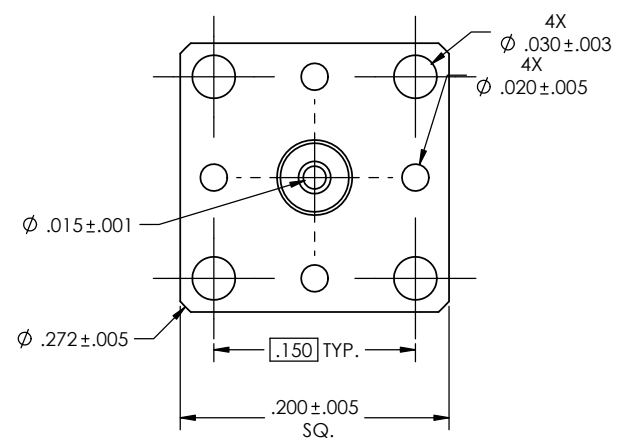


FIGURE 1



SCALE	SUB-DIRECTORY/	SHEET 2 OF 2
14:1	OUTLINE/	
SIZE	CAGE CODE	DRAWING NO.
C	30990	P603
		REV. F