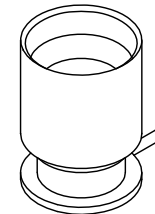
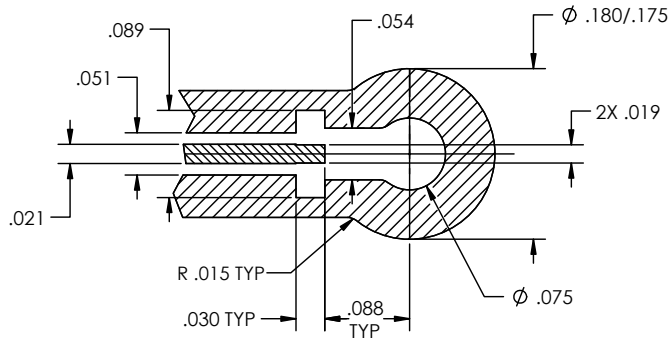


PART NO.	INTERFACE(S)	(Ø A)	FIGURE(S)	PACKAGING NOTE(S)
-1CC	FULL DETENT	(.116)	1	NONE
-2CC	LIMITED DETENT	(.120)	1	NONE
-3CC	SMOOTH BORE	(.125)	1	NONE
-4CC	CATCHERS MITT	(.125)	2	NONE
-1CCT	FULL DETENT	(.116)	3	NONE
-2CCT	LIMITED DETENT	(.120)	3	NONE
-3CCT	SMOOTH BORE	(.125)	3	NONE
-4CCT	CATCHERS MITT	(.125)	4	NONE
-1CCTR	FULL DETENT	(.116)	1	SEE SHEET 3 OF 3
-2CCTR	LIMITED DETENT	(.120)	1	SEE SHEET 3 OF 3
-3CCTR	SMOOTH BORE	(.125)	1	SEE SHEET 3 OF 3
-4CCTR	CATCHERS MITT	(.125)	2	SEE SHEET 3 OF 3
-1CCTTR	FULL DETENT	(.116)	3	SEE SHEET 3 OF 3
-2CCTTR	LIMITED DETENT	(.120)	3	SEE SHEET 3 OF 3
-3CCTTR	SMOOTH BORE	(.125)	3	SEE SHEET 3 OF 3
-4CCTTR	CATCHERS MITT	(.125)	4	SEE SHEET 3 OF 3



MOUNTING HOLE PATTERN

NOTE(S):

- ① DIMENSIONS SHOWN ARE FOR ROGERS 4350 PCB MATERIAL. THESE DIMENSIONS MAY VARY DEPENDING ON PCB MATERIAL USED.
- ② SHADED AREA OF BODY & CONTACT AREA NOTED TO BE PRE-TINNED USING Sn63Pb37 SOLDER.

TAPE AND REEL ON SHEET 3 OF 3

MATERIAL(S):	ELECTRICAL(S):	MECHANICAL(S):	ENVIRONMENTAL(S):
SMP Body, Rear Body: Brass Alloy per ASTM B-16. or BeCu Alloy per ASTM B-196. Center Conductor: Brass Alloy per ASTM B-16. Insulator: Torlon per AMS 3670. or ASTM D-5204.	Impedance: 50 Ohms Nominal Frequency Range: DC to 18 GHz VSWR: 1.15:1 max to 18 GHz. Insertion Loss: .10 dB max to 18 GHz. Working Voltage: 335 Vrms @ Sea Level Dielectric Withstanding Voltage: 500 Vrms min. R.F. HiPot Voltage: 325 Vrms min. @ 5MHz Corona Level: 125 Vrms @ 70,000 ft Insulation Resistance: 5,000 MegOhms min. Contact Resistance: Center Contact: 6.0 Milliohms max Outer Contact: 2.0 Milliohms max	Mating Characteristics: Interface per MIL-STD-348. Force to Engage and Disengage: Engage: Full Detent: 10 lbs max Limited Detent: 5 lbs max Smooth Bore / Catchers Mitt: 2 lbs max Disengage: Full Detent: 2.0 lbs max Limited Detent: 1.5 lbs max Smooth Bore / Catchers Mitt: .50 lbs min Center Contact Retention: Axial Force: 1.5 pounds min. Radial Torque: NA Connector Durability: Depend on Detent.	Temperature Range: -65°C to +165°C Maximum Soldering Temperature: 260°. Thermal Shock: MIL-STD-202, Method 107, Test Cond B Moisture Resistance: MIL-STD-202, Method 106, no measurement at high humidity. Insulation resistance at least 200 MegOhms within 5 minutes after removal from humidity. Corrosion: MIL-STD-202, Method 101, Test Cond B Vibration: MIL-STD-202, Method 204, Test Cond D Shock: MIL-STD-202, Method 213, Test Cond I

FINISH(ES):

SMP Body:
Gold plate per ASTM B-488, Type II, Code C, .000010 min thick,
over Nickel under plate per SAE-AMS-QQ-N-290, Class 1, .000050 min thick.
Rear Body: (for Tinned version)
Copper plate per SAE-AMS 2418J, .000100/.000200 thick; 60/40 fuse tin-lead per
SEA-AMS 81728C, .000100/.000300 thick;
Center Conductor:
Gold plate per ASTM B-488, Type II, Code C, .000050 min thick,
over Nickel under plate per SAE-AMS-QQ-N-290, Class 1, .000050 min thick.
Note: For Tinned version, certain area of C/C to be de-golded using Sn63Pb37.

APPLICABLE Amphenol CDI DOCUMENTS		
WORK STANDARD	PROD INSTRUC	ASSY INSTRUC
NA	NA	NA

NOTICE
THIS DRAWING EMBODIES A CONFIDENTIAL PROPRIETARY DESIGN ORIGINATED BY Amphenol CDI & ALL DESIGN, MANUFACTURING, REPRODUCTION, USE & SALE RIGHTS REGARDING THE SAME ARE EXPRESSLY RESERVED. IT IS SUBMITTED UNDER A CONFIDENTIAL RELATIONSHIP FOR A SPECIFIED PURPOSE & THE RECIPIENT AGREES BY ACCEPTING THIS DRAWING NOT TO SUPPLY OR DISCLOSE ANY INFORMATION REGARDING IT TO ANY UNAUTHORIZED PERSON TO INCORPORATE IN OTHER PROJECTS AND SPECIAL FEATURES PECULIAR TO THIS DESIGN. ALL PATENT RIGHTS HERETO ARE EXPRESSLY RESERVED BY Amphenol CDI, CERRITOS, CALIFORNIA 94009.

TOLERANCES AND NOTES
EXCEPT AS NOTED DIMENSIONS ARE IN INCHES.
XX ±.015
LINEAR XXX ±.005 ANGULAR ± 1/2°
FRACTION ± 1/32
INTERPRET DRAWING PER ASME Y14.5 - 2018
1. MACHINE FINISH: .4 RMS
2. BREAK ALL SHARP EDGES .003 MAX.
3. MACHINED FILLETS .005 MAX.
4. MACHINED SURFACES SQUARE TO RESPECTIVE AXES WITHIN .005 INCHES PER INCH.
5. MACHINED DIAMETERS CONCENTRIC WITHIN .002 TLR.
6. DIMENSIONS TO BE MET BEFORE PLATING.
7. CHAMFER ALL THREADS 45°.
8. THREADS PER H-28
9. REMOVE FRAYED EDGES ON TEFLON.
10. REMOVE ALL BURRS.

MATERIAL		SPECIFICATION		PROCUREMENT		
APPROVAL INITIALS	DATE	12900 Alondra Blvd. Cerritos, CA 94070		TITLE SMP MALE STRAIGHT PCB SURFAVE MOUNT		
DRAWN BY	ATV					05.27.99
CHECKED BY	-					-
TEST ENGR	-					-
QUALITY	-	-	SCALE	SUB-DIRECTORY/		
DESIGN ENG	MP	07.27.99	16:1	OUTLINE\		
MFG. ENGR	-	-	SIZE	DRAWING NO.		
ECO APPRV	DNg	11.25.24	C	30990	P703	
			SHEET 1 OF 3		REV. M	

FIGURE 1

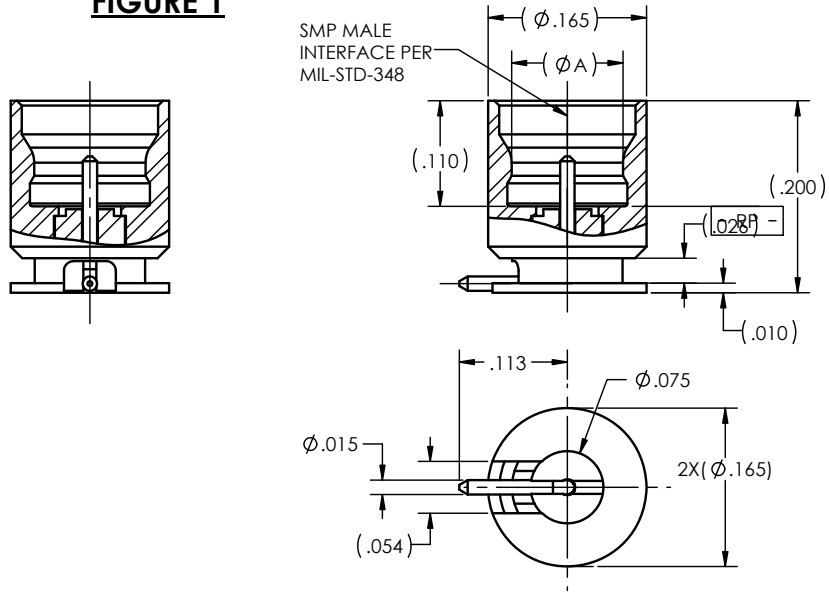


FIGURE 2

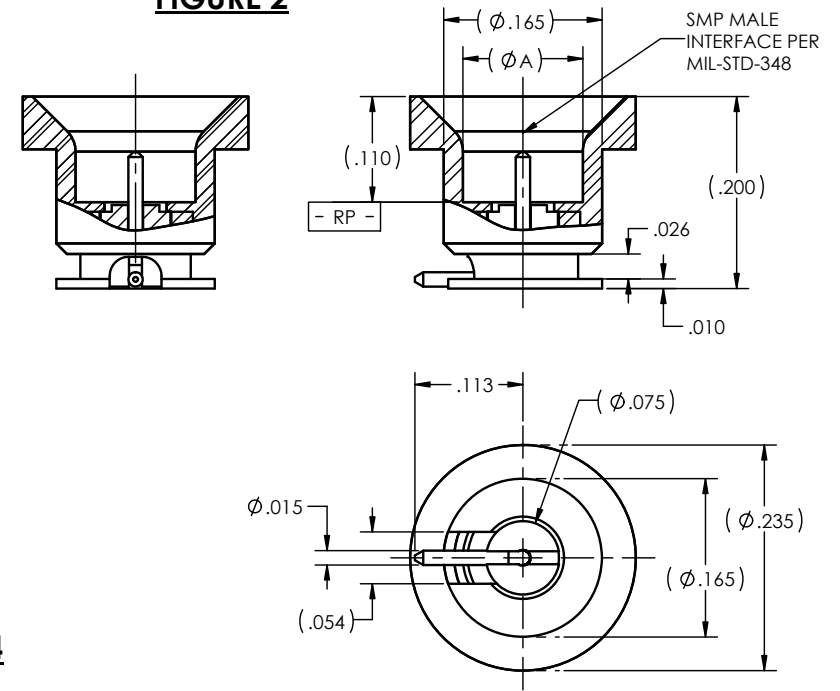


FIGURE 3

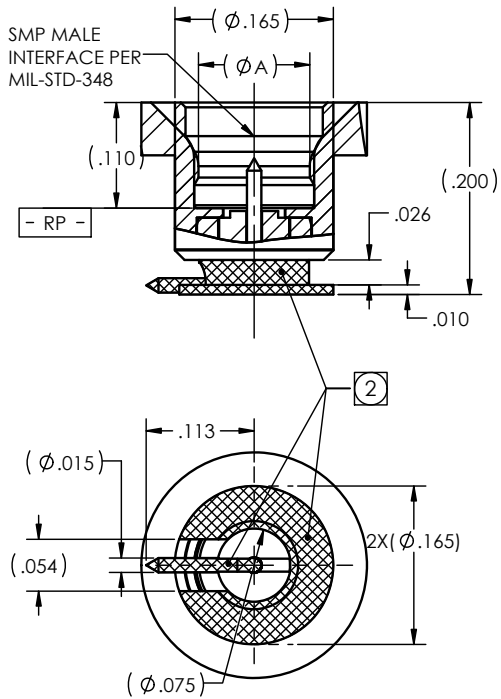
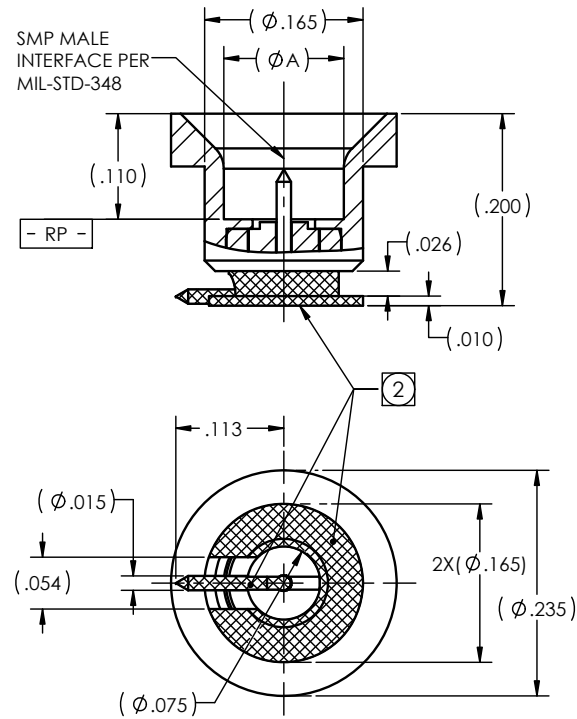
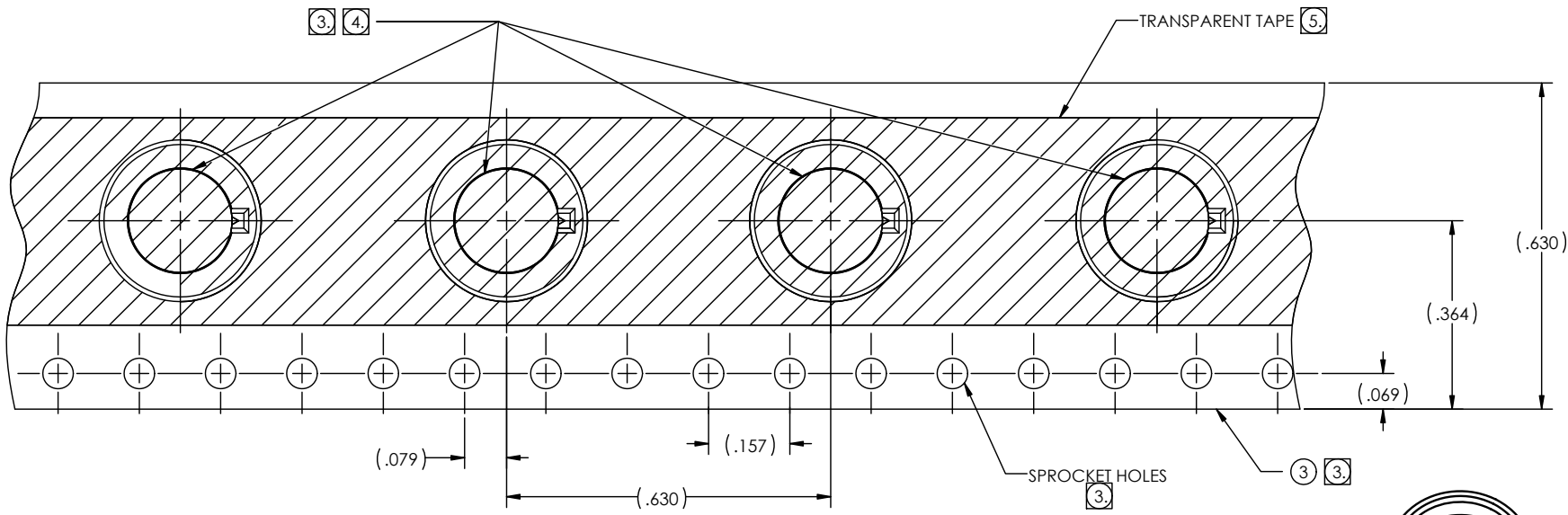
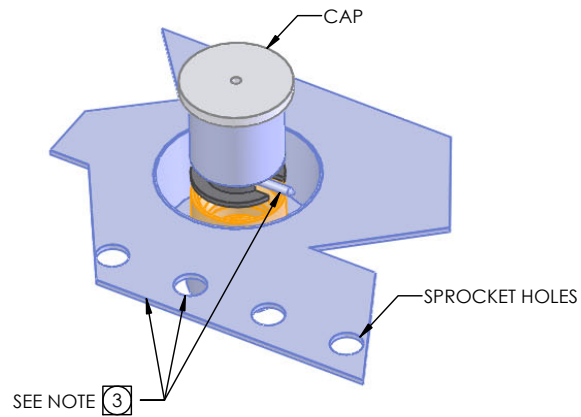
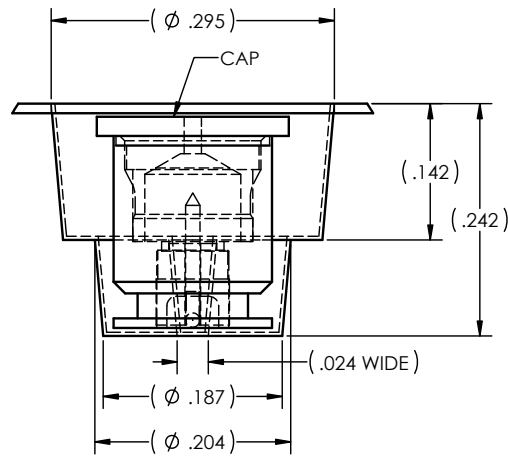


FIGURE 4

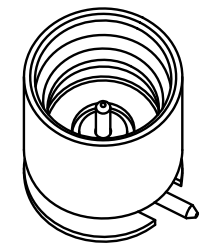


SCALE	SUB-DIRECTORY/ OUTLINE	SHEET 2 OF 3
SIZE	DRAWING NO.	REV.
C	30990	P703 M



PACKAGING NOTE(S) :

1. TAPE & REEL TO BE PROVIDED BY APPROVED SOURCE OF SUPPLY.
2. WHITE, INTERNALLY ANTISTATIC DISSIPATIVE 13 INCH REEL SHALL HAVE A STANDARD 4 IN. INNER HUB, & A CENTER ARBOR HOLE OF .512 IN. +.020/-.008 (EIA STANDARD).
3. EACH CONNECTOR SHALL BE PLACED ONTO CARRIER TAPE WITH CONNECTOR CONTACT FACING PARALLEL TO THE LENGTH OF THE TAPE.
4. MAXIMUM PIECES OF CONNECTORS THAT CAN BE FITTED INTO CARRIER TAPE & 13 IN REEL CONFIGURATION IS 500 pcs.
5. SMP CONNECTOR IS HELD ON CARRIER TAPE USING A TRANSPARENT TAPE.



SCALE	SUB-DIRECTORY/	SHEET 3 OF 3
NONE	OUTLINE	
SIZE	CAGE CODE	DRAWING NO.
C	30990	P703
		REV.
		M