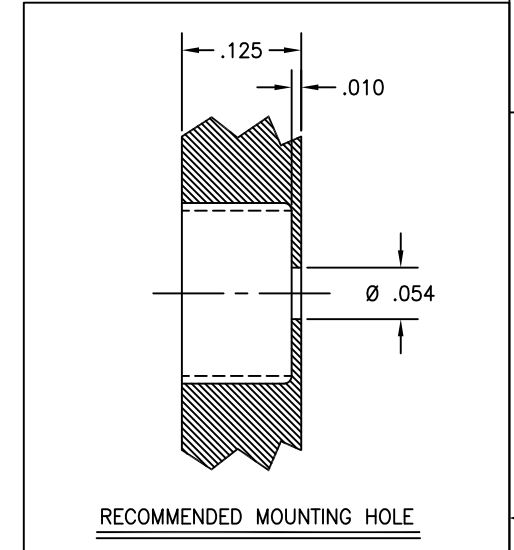
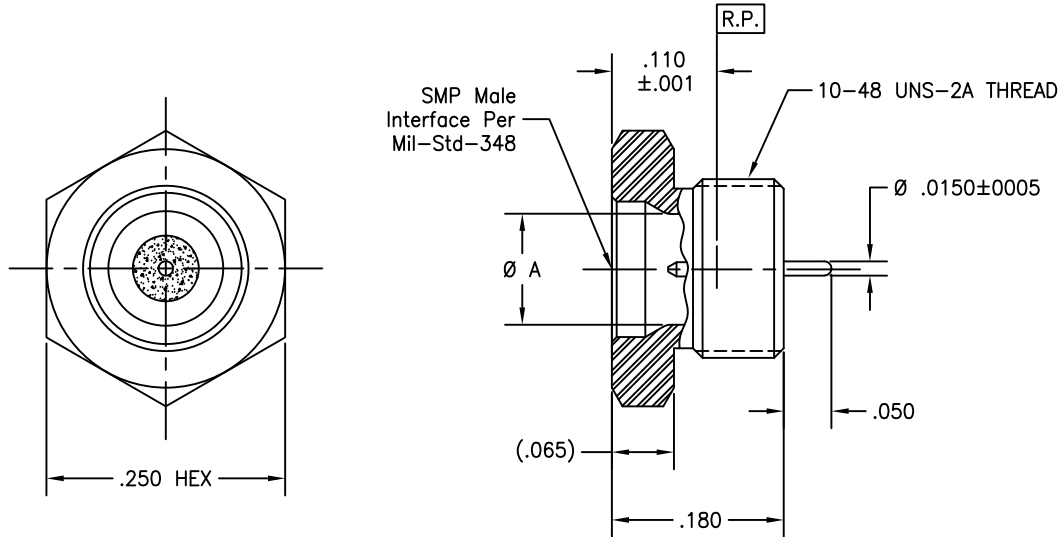


P/N	INTERFACE(S)	Ø A
-1CC	FULL DETENT	.116±.001
-2CC	LIMITED DETENT	.120±.001
-3CC	SMOOTH BORE	.125±.001

REVISIONS			
REV	DESCRIPTION	DATE	BY
C	ECO 22455	09.11.09	DKN
D	ECO 202352 (ADD NEW NAME)	11.25.24	DKN



MATERIAL(S):	ELECTRICAL:	MECHANICAL:	ENVIRONMENTAL:												
Body: 303 sst per ASTM A-582. Center Conductor: Kovar per ASTM F 15. Glass Seal: Corning 7070	Impedance: 50 Ohms nominal. Frequency Range: DC to 18 GHz. VSWR: 1.10 + .005 X f(GHz) max. Insertion Loss: .03√f(GHz) dB. Working Voltage: 335 Vrms @ sea level. Dielectric Withstanding Voltage: 500 Vrms. R.F. HiPot Voltage: 325 Vrms Min @ 5MHz. Corona Level: 190 Vrms @ 70,000 ft. Insulation Resistance: 5,000 MegOhms. Contact Resistance: Center Conductor: 4.0 Milliohms maximum. Permeability: Less than 2.0 mu. R.F. Leakage: -80 dB max to 3.0 GHz. -65 dB max to 18.0 GHz.	Interface Dimensions: MIL-STD-348 Connector Durability: Full detent: 100 Cycles. Limited Detent: 500 Cycles. Smooth Bore: 1,000 Cycles. Center Contact Retention: 10 lbs Min Axial. Force to Engage and Disengage: <table border="0"> <tr> <td></td> <td>Engage</td> <td>Disengage</td> </tr> <tr> <td>Full detent:</td> <td>15 lbs max</td> <td>5 lbs min</td> </tr> <tr> <td>Limited Detent:</td> <td>10 lbs max</td> <td>2 lbs min</td> </tr> <tr> <td>Smooth Bore:</td> <td>2 lbs max</td> <td>.5 lbs min</td> </tr> </table> Hermeticity Leak Rate: 1X10 ⁻⁸ cc/sec He @ 1 atm.		Engage	Disengage	Full detent:	15 lbs max	5 lbs min	Limited Detent:	10 lbs max	2 lbs min	Smooth Bore:	2 lbs max	.5 lbs min	Temperature Range: -65°C to +165°C. Thermal Shock: Mil-Std-202, Method 107, Test Cond. B. Moisture Resistance: Mil-Std-202, Method 106, Insulation resistance at least 200 MegOhms within 5 minutes after removal from humidity. Corrosion: Mil-Std-202, Method 101, Test Cond. B. Vibration: Mil-Std-202, Method 204, Test Cond. D. Shock: Mil-Std-202, Method 213, Test Cond. I. Solderability: Mil-Std-202, Method 208.
	Engage	Disengage													
Full detent:	15 lbs max	5 lbs min													
Limited Detent:	10 lbs max	2 lbs min													
Smooth Bore:	2 lbs max	.5 lbs min													

FINISH(ES):	APPLICABLE Amphenol CDI DOCUMENTS	TOLERANCES AND NOTES EXCEPT AS NOTED	MATERIAL	SPECIFICATION	PROCUREMENT						
Body & Center Conductor: Gold plate per ASTM B-488, Type II, Code C or D, CLASS 0.25; over nickel plate per SAE-AMS-QQ-N-290, Class 1.	<table border="1"> <thead> <tr> <th>WORK STD</th> <th>PROD INST</th> <th>ASSY INST</th> </tr> </thead> <tbody> <tr> <td>NA</td> <td>NA</td> <td>NA</td> </tr> </tbody> </table>	WORK STD	PROD INST	ASSY INST	NA	NA	NA	INTERPRET DRAWING PER ASME Y14.5-2018 DIMENSIONS ARE IN INCHES: LINEAR .001 ±.0015 ANGULAR ± 1/2° FRACTION ± 1/32 1. MACHINE FINISH: 63/RMS 2. BREAK ALL SHARP EDGES .003 MAX. 3. MACHINED FLETTETS .005 MAX. 4. MACHINED SURFACES SQUARE TO RESPECTIVE AXIS WITHIN .005 INCHES PER INCH. 5. MACHINED DIAMETERS CONCENTRIC WITHIN .002 T.I.R. 6. DIMENSIONS TO BE MET BEFORE PLATING. 7. CHAMFER ALL THREADS 45°. 8. THREADS PER H-29. 9. REMOVE FRAVED EDGES ON TEFLON. 10. REMOVE ALL BURRS.	APPROVAL INITIALS: BRD DATE: 02/15/96 DRAWN BY: BRD CHECKED BY: TEST ENGG: QUALITY: DESIGN ENGG: P.MAO DATE: 09.18.09 MFG ENGG: ECO APPRV: DNg DATE: 11.25.24	Amphenol CDI 12900 Alondra Blvd. Cerritos, CA 90703 TITLE: SMP MALE EXTERNAL THREAD PANEL MOUNT HERMETIC SEAL TO STRAIGHT TERMIN. SCALE: 10:1 DIRECTORY/SUB-DIRECTORY: _OUTLINE\ SHEET 1 of 1	SIZE: C CASE CODE: 30990 DRAWING NO.: P683 REV: D
WORK STD	PROD INST	ASSY INST									
NA	NA	NA									