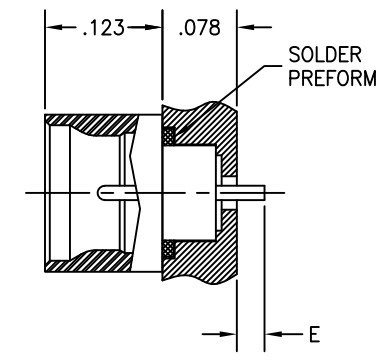
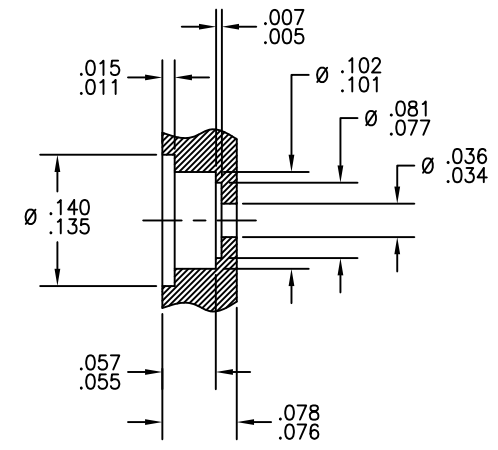
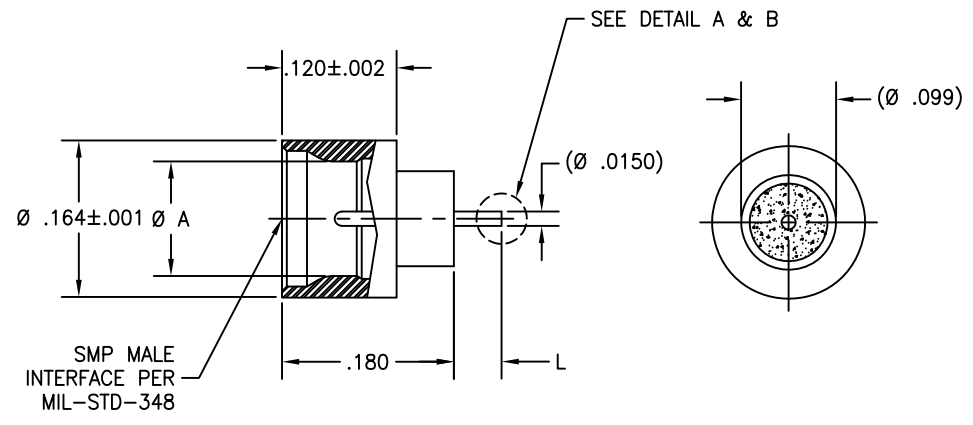
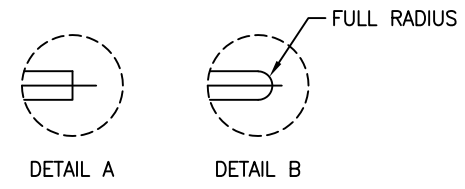


P/N	INTERFACE(S)	Ø A	L	E	DETAIL
-1CC	FULL DETENT	.116±.001	.050	.030	A
-2CC	LIMITED DETENT	.120±.001	.050	.030	A
-3CC	SMOOTH BORE	.125±.001	.050	.030	A
-4CC	FULL DETENT	.116±.001	.240	.220	B
-5CC	LIMITED DETENT	.120±.001	.240	.220	B
-6CC	SMOOTH BORE	.125±.001	.240	.220	B
-7CC	FULL DETENT	.116±.001	.090	.070	B
-8CC	LIMITED DETENT	.120±.001	.090	.070	B
-9CC	SMOOTH BORE	.125±.001	.090	.070	B

REVISIONS			
REV	DESCRIPTION	DATE	BY
D	ECO 18822 (ADD -4CC thru -6CC)	11.02.05	DKN
E	ECO 29316 (ADD -7CC thru -9CC)	09.04.15	YP
F	ECO 202352 (ADD NEW NAME)	11.25.24	DKN



MATERIAL:	ELECTRICAL:	MECHANICAL:	ENVIRONMENTAL:
Body & Center Conductor: Iron-Nickel-Cobalt sealing per ASTM F-15 Glass: Corning 7070	Impedance: 50 Ohms Nom. Freq. Range: DC TO 18 GHz VSWR: 1.10 + .005*f (GHz) Insertion Loss: .035 x √f GHz Working Voltage: 600 Vrms @ Sea Level Dielectric Withstand Voltage: 500 V rms RF HiPot Voltage: 325 Vrms Min @ 5MHz Corona Level: 190 Vrms @ 70,000 ft Insulation Resistance: 5000 Mohms Contact Resistance: 4.0 Milliohms Max RF Leakage: -80 dB max to 3.0 GHz -65 dB max to 18.0 GHz	Interface Dimensions: MIL-STD-348 Connector Durability: Full detent: 100 Cycles Limited Detent: 500 Cycles Smooth Bore: 1000 Cycles Center Contact Retention: 10 lbs Min Axial Force to Engage and Disengage: Engage Disengage Full detent: 10 lbs max 5 lbs min Limited Detent: 8 lbs max 2 lbs min Smooth Bore: 2 lbs max .5 lbs min Hermeticity Leak Rate: 1X10 ⁻⁸ cc/sec He @ 1 atm.	Temp. Range: -65°C to +165°C Thermal Shock: MIL-STD-202, Method 107, Test Cond. B Moisture Resistance: MIL-STD-202, Method 106. Insulation resistance at least 200 MegaOhms within 5 minutes after removal from humidity Corrosion: MIL-STD-202, Method 101, Test Cond. B Vibration: MIL-STD-202, Method 204, Test Cond. D Shock: Mil-Std-202, Method 213, Test Cond. I.

FINISH:	APPLICABLE Amphenol CDI DOCUMENTS			TOLERANCES AND NOTES EXCEPT AS NOTED	MATERIAL		
	WORK STD	PROD INST	ASSY INST		APPROVAL INITIALS	DATE	PROCUREMENT
Body & Center Conductor: Gold plate per ASTM B-488, Type III, CODE A, CLASS 2.5. over electroless nickel plate per SAE-AMS-QQ-N-290, Class 1.	NA	NA	NA	INTERPRET DRAWING PER ASME Y14.5-2018 DIMENSIONS ARE IN INCHES: LINEAR .001 ±.005 ANGULAR ± 1/2° FRACTION ± 1/32 1. MACHINE FINISH: #3/RMS 2. BREAK ALL SHARP EDGES .003 MAX. 3. MACHINED FILLETS .005 MAX. 4. MACHINED SURFACES SQUARE TO RESPECTIVE AXIS WITHIN .005 INCHES PER INCH. 5. MACHINED DIAMETERS CONCENTRIC WITHIN .002 T.I.R. 6. DIMENSIONS TO BE MET BEFORE PLATING. 7. CHAMFER ALL THREADS 45°. 8. THREADS PER H-28. 9. REMOVE FRayed EDGES ON TREFLON. 10. REMOVE ALL BURRS.	BRD	02/14/96	Amphenol CDI 12900 Alondra Blvd. Cerritos, CA 90703
	NOTICE						TITLE SMP MALE (HERMETIC SEAL) TO STRAIGHT TERMINATION
							SCALE 10/1
							SHEET 1 OF 1
							SIZE CASE CODE DRAWING NO. REV. C 30990 P682 F