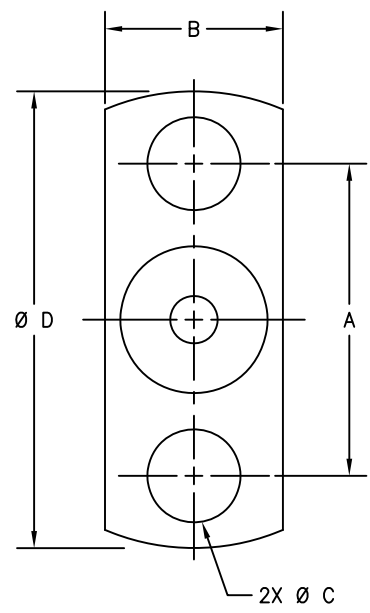
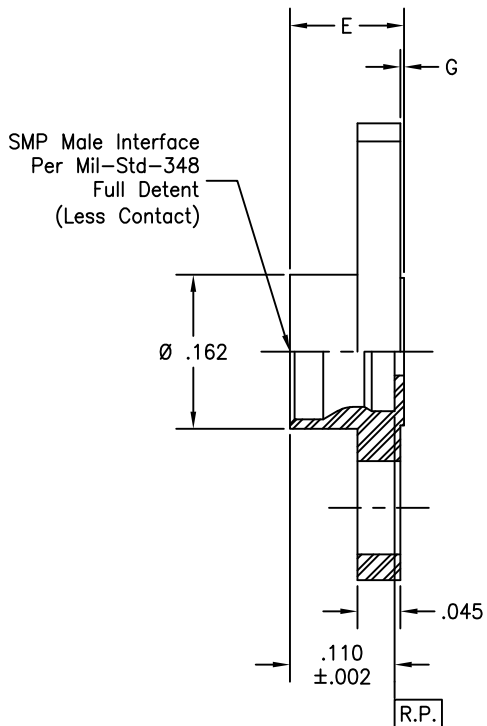


P/N	A	B	Ø C	Ø D	E	F	G
-1SF	.328	.187	.098	.480	.120	.045	.004
-2SF	.481	.223	.102	.625	.120	.045	.002
-3SF	.282	.165	.073	.400	.120	.045	.002
-4SF	.400	.186	.103	.550	.120	.045	.004
-5SF	.282	.165	.073	.400	.120	.045	.005
-6SF	.282	.165	①	.400	.120	.045	.005
-7SF	NR	NR	NR	.625	.120	.075	.003
-8SF	.481	.223	.102	.625	.120	.045	.004
-8	.481	.223	.102	.625	.120	.045	.004
-9SF	.282	.165	.073	.400	.120	.045	.004
-10SF	.328	.187	.098	.480	.120	.045	.005

REVISIONS			
REV	DESCRIPTION	DATE	BY
H	ECO 22232	06.05.09	K.NG
J	ECO 26131 (ADD -8)	08.31.12	YP
K	ECO 202352 (ADD NEW NAME)	11.25.24	DKN



Note(s):  
 ① 2X #0-80 UNF-2B X Ø .085 X 90° COUNTERSINK.

MATERIAL:	MECHANICAL:	ENVIRONMENTAL:
Body: 303 sst per ASTM A-582.	Mating Characteristics: Interface per Mil-Std-348. Force To Engage & Disengage: Engage: 15 pounds max. Disengage: 5 pounds min. Connector Durability: 100 cycles min.	Temperature Range: -65°C to +165°C. Thermal Shock: Mil-Std-202, Method 107, Test Cond. B. Moisture Resistance: Mil-Std-202, Method 106, except step 7b shall be omitted. Corrosion: Mil-Std-202, Method 101, Test Cond. B. Vibration: Mil-Std-202, Method 204, Test Cond. D. Shock: Mil-Std-202, Method 213, Test Cond. I.

FINISH:	APPLICABLE Amphenol CDI DOCUMENTS	TOLERANCES AND NOTES EXCEPT AS NOTED	MATERIAL	SPECIFICATION	PROCUREMENT
Body: (for SF) Passivate per ASTM A-967, Nitric 1. Body: (for BASIC) Gold plate per - ASTM B-488, type II, code C or D, over nickel underplate per SAE-AMS-QQ-N-290, class 1.	WORK STD NA PROD INST NA ASSY INST NA	INTERPRET DRAWING PER ASME Y14.5-2018 DIMENSIONS ARE IN INCHES: LINEAR .001 ±.015 .004 ±.005 FRACTION ± 1/32 1. MACHINE FINISH: 63/RMS 2. BREAK ALL SHARP EDGES .003 MAX. 3. MACHINED FILLETS .005 MAX. 4. MACHINED SURFACES SQUARE TO RESPECTIVE AXIS WITHIN .005 INCHES PER INCH. 5. MACHINED DIAMETERS CONCENTRIC WITHIN .002 T.I.R. 6. DIMENSIONS TO BE MET BEFORE PLATING. 7. CHAMFER ALL THREADS 45°. 8. THREADS PER H-28. 9. REMOVE FRAYED EDGES ON TEFLON. 10. REMOVE ALL BURRS.	BRD	12900 Alondra Blvd. Cerritos, CA 90703	12900 Alondra Blvd. Cerritos, CA 90703
			APPROVAL INITIALS DRAWN BY TEST ENGG QUALITY DESIGN ENGG MFG ENGG ECO APPRV	DATE 02/15/96 06.26.09 11.25.24	TITLE SMP FULL DETENT STRAIGHT 2 HOLE FLANGE MOUNT SHROUD SCALE 10/1 _OUTLINE/_OLP/ SHEET 1 OF 1 CAGE CODE P670