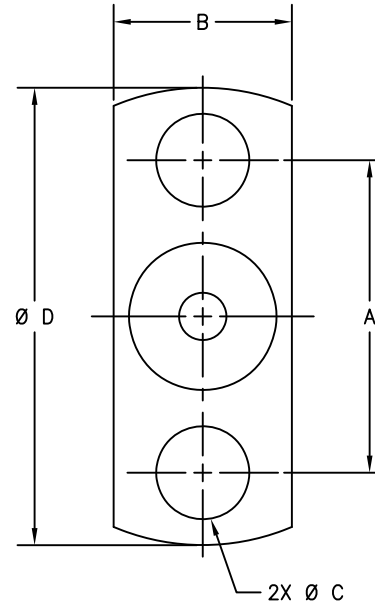
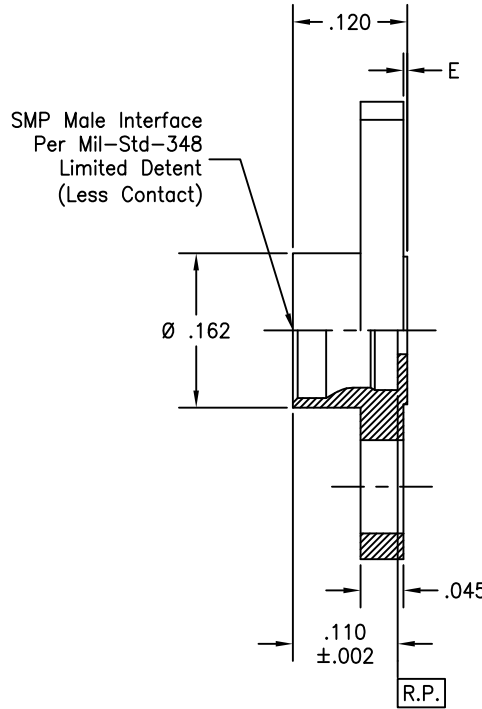


P/N	A	B	Ø C	Ø D	E
-1SF	.328	.187	.098	.480	.004
-2SF	.481	.223	.102	.625	.004
-3SF	.282	.165	.073	.400	.002
-4SF	.400	.187	.103	.550	.004

REVISIONS			
REV	DESCRIPTION	DATE	BY
H	ECO 19458	11.28.07	P.MAO
J	ECO 202352 (ADD NEW NAME)	11.25.24	DKN



MATERIAL(S):	ELECTRICAL(S):	MECHANICAL(S):	ENVIRONMENTAL:
Body: 303 sst per ASTM A 582.		Mating Characteristics: Interface per Mil-Std-348, less contact. Force To Engage & Disengage: Engage: 10 pounds max. Disengage: 2 pounds min. Permeability: Less than 2.0 mu. Connector Durability: 500 cycles min.	Temperature Range: -65°C to +165°C. Thermal Shock: Mil-Std-202, Method 107, Test Cond. B. Moisture Resistance: Mil-Std-202, Method 106, except step 7b shall be omitted. Corrosion: Mil-Std-202, Method 101, Test Cond. B. Vibration: Mil-Std-202, Method 204, Test Cond. D. Shock: Mil-Std-202, Method 213, Test Cond. I.

FINISH(ES):	APPLICABLE Amphenol CDI DOCUMENTS	TOLERANCES AND NOTES EXCEPT AS NOTED	-		-		-									
Body: Passivate per ASTM A 967, Nitric 1.	<table border="1"> <thead> <tr> <th>WORK STD</th> <th>PROD INST</th> <th>ASSY INST</th> </tr> </thead> <tbody> <tr> <td>NA</td> <td>NA</td> <td>NA</td> </tr> </tbody> </table>	WORK STD	PROD INST	ASSY INST	NA	NA	NA	<p>INTERPRET DRAWING PER ASME Y14.5-2018</p> <p>DIMENSIONS ARE IN INCHES:</p> <p>LINEAR .001 ±.015 ANGULAR ± 1/2° FRACTION ± 1/32</p> <p>1. MACHINE FINISH: ES / RMS 2. BREAK ALL SHARP EDGES .003 MAX. 3. MACHINED FILLETS .005 MAX. 4. MACHINED SURFACES SQUARE TO RESPECTIVE AXIS WITHIN .005 INCHES PER INCH. 5. MACHINED DIAMETERS CONCENTRIC WITHIN .002 T.I.R. 6. DIMENSIONS TO BE MET BEFORE PLATING. 7. CHAMFER ALL THREADS 45°. 8. THROATEN PER 11-25. 9. REMOVE FRAYED EDGES ON TEFLON. 10. REMOVE ALL BURRS.</p>	APPROVAL INITIALS	DATE	MATERIAL		SPECIFICATION		PROCUREMENT	
WORK STD	PROD INST	ASSY INST														
NA	NA	NA														
			DRAWN BY	BRD	02.05.96	Amphenol CDI		12900 Alondra Blvd. Cerritos, CA 90703								
			CHECKED BY			TITLE		SMP MALE, LIMITED DETENT, SHROUD, 2 HOLE FLANGE PANEL MOUNT								
			TEST ENGG			SCALE		10:1								
			DESIGN ENGG	PM	11.28.07	DIRECTORY/SUB-DIRECTORY		_OUTLINE\								
			MFG ENGG			SIZE		C 30990								
			ECO APPRV	DNg	11.25.24	CAGE CODE		DRAWING NO. P672								
						SHEET		1 OF 1								
						REV.		J								