

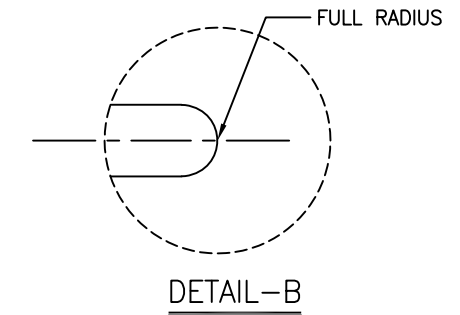
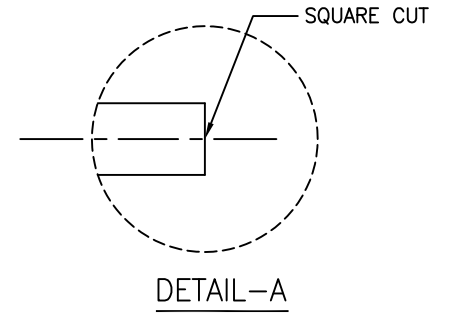
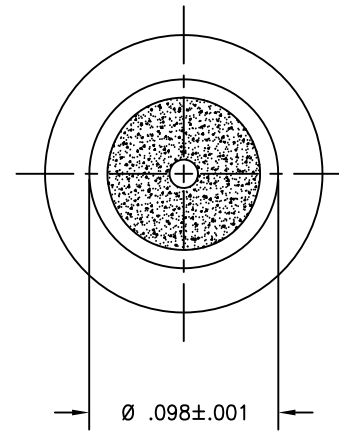
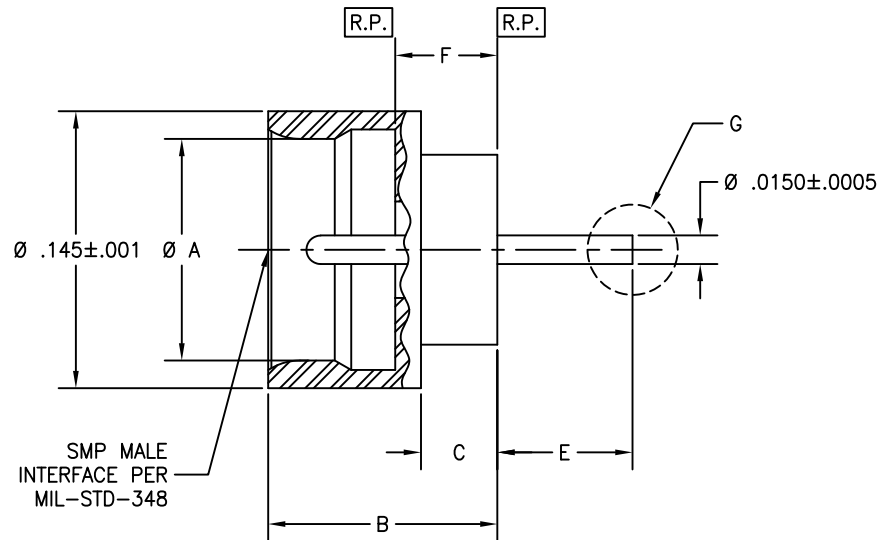
4

3

2

1

REVISIONS			
REV	DESCRIPTION	DATE	BY
K	ECO 30431	03.31.16	YP
L	ECO 34789	04.18.19	DT
M	ECO 202352 (ADD NEW NAME)	11.25.24	DKN



MATERIAL:	ELECTRICAL:	MECHANICAL:	ENVIRONMENTAL:												
Body & Center Conductor: Iron-Nickel-Cobalt sealing per ASTM F-15 Glass: Corning 7070	Impedance: 50 Ohms Nom. Freq. Range: DC TO 18 GHz VSWR: 1.10 + .005*f (GHz) Insertion Loss: .035 x √f GHz Working Voltage: 600 Vrms @ Sea Level Dielectric Withstand Voltage: 500 V rms RF HiPot Voltage: 325 Vrms Min @ 5MHz Corona Level: 190 Vrms @ 70,000 ft Insulation Resistance: 5000 Mohms Contact Resistance: 4.0 Milliohms Max RF Leakage: -80 dB max to 3.0 GHz -65 dB max to 18.0 GHz	Interface Dimensions: Modified MIL-STD-348 Connector Durability: Full detent: 100 Cycles Limited Detent: 500 Cycles Smooth Bore: 1000 Cycles Center Contact Retention: 10 lbs Min Axial Force to Engage and Disengage: <table border="0"> <tr> <td></td> <td>Engage</td> <td>Disengage</td> </tr> <tr> <td>Full detent:</td> <td>10 lbs max</td> <td>5 lbs min</td> </tr> <tr> <td>Limited Detent:</td> <td>8 lbs max</td> <td>2 lbs min</td> </tr> <tr> <td>Smooth Bore:</td> <td>2 lbs max</td> <td>.5 lbs min</td> </tr> </table> Hermeticity Leak Rate: 1X10 ⁻⁸ cc/sec He @ 1 atm.		Engage	Disengage	Full detent:	10 lbs max	5 lbs min	Limited Detent:	8 lbs max	2 lbs min	Smooth Bore:	2 lbs max	.5 lbs min	Temp. Range: -65°C to +165°C Thermal Shock: MIL-STD-202, Method 107, Test Cond. B Moisture Resistance: MIL-STD-202, Method 106. Insulation resistance at least 200 MegaOhms within 5 minutes after removal from humidity Corrosion: MIL-STD-202, Method 101, Test Cond. B Vibration: MIL-STD-202, Method 204, Test Cond. D Shock: MIL-STD-202, Method 213, Test Cond. I
	Engage	Disengage													
Full detent:	10 lbs max	5 lbs min													
Limited Detent:	8 lbs max	2 lbs min													
Smooth Bore:	2 lbs max	.5 lbs min													

FINISH:	APPLICABLE Amphenol CDI DOCUMENTS	TOLERANCES AND NOTES EXCEPT AS NOTED	MATERIAL		SPECIFICATION		PROCUREMENT																																												
Body & Center Conductor: Gold plate per ASTM B-488, Type III, CODE A, CLASS 2.5. over electroless nickel plate per SAE-AMS-QQ-N-290, Class 1.	<table border="1"> <thead> <tr> <th>WORK STD</th> <th>PROD INST</th> <th>ASSY INST</th> </tr> </thead> <tbody> <tr> <td>NA</td> <td>NA</td> <td>AI-293</td> </tr> </tbody> </table>	WORK STD	PROD INST	ASSY INST	NA	NA	AI-293	INTERPRET DRAWING PER ASME Y14.5-2018 DIMENSIONS ARE IN INCHES: LINEAR .001 ±.010 ANGULAR ± 1/2° FRACTION ± 1/32 1. MACHINE FINISH: 63/RMS 2. BREAK ALL SHARP EDGES .003 MAX. 3. MACHINED FLEETS .005 MAX. 4. MACHINED SURFACES SQUARE TO RESPECTIVE AXIS WITHIN .005 INCHES PER INCH. 5. MACHINED DIAMETERS CONCENTRIC WITHIN .002 T.I.R. 6. DIMENSIONS TO BE MET BEFORE PLATING. 7. CHAMFER ALL THREADS 45°. 8. THREADS PER H-28. 9. REMOVE FINISHED EDGES ON TEFLON. 10. REMOVE ALL BURRS.	<table border="1"> <thead> <tr> <th>APPROVAL INITIALS</th> <th>DATE</th> </tr> </thead> <tbody> <tr> <td>BRD</td> <td>02/14/96</td> </tr> </tbody> </table>	APPROVAL INITIALS	DATE	BRD	02/14/96	<table border="1"> <thead> <tr> <th>DESIGN ENGG</th> <th>DATE</th> </tr> </thead> <tbody> <tr> <td>JCB</td> <td>02.26.08</td> </tr> </tbody> </table>	DESIGN ENGG	DATE	JCB	02.26.08	<table border="1"> <thead> <tr> <th>TEST ENGG</th> <th>DATE</th> </tr> </thead> <tbody> <tr> <td></td> <td></td> </tr> </tbody> </table>	TEST ENGG	DATE			<table border="1"> <thead> <tr> <th>QUALITY</th> <th>DATE</th> </tr> </thead> <tbody> <tr> <td></td> <td></td> </tr> </tbody> </table>	QUALITY	DATE			<table border="1"> <thead> <tr> <th>DESIGN ENGG</th> <th>DATE</th> </tr> </thead> <tbody> <tr> <td>JCB</td> <td>02.26.08</td> </tr> </tbody> </table>	DESIGN ENGG	DATE	JCB	02.26.08	<table border="1"> <thead> <tr> <th>MFG ENGG</th> <th>DATE</th> </tr> </thead> <tbody> <tr> <td></td> <td></td> </tr> </tbody> </table>	MFG ENGG	DATE			<table border="1"> <thead> <tr> <th>ECO APPRV</th> <th>DATE</th> </tr> </thead> <tbody> <tr> <td>DNg</td> <td>11.25.24</td> </tr> </tbody> </table>	ECO APPRV	DATE	DNg	11.25.24	TITLE SMP MALE, HERMETIC SEAL SURFACE PANEL MOUNT SOLDER TO STRAIGHT TERMINATION	SCALE 20:1	DIRECTORY/SUB-DIRECTORY _OUTLINE/	SHEET 1 of 2	SIZE C	CASE CODE 30990	DRAWING NO. P680	REV. M
WORK STD	PROD INST	ASSY INST																																																	
NA	NA	AI-293																																																	
APPROVAL INITIALS	DATE																																																		
BRD	02/14/96																																																		
DESIGN ENGG	DATE																																																		
JCB	02.26.08																																																		
TEST ENGG	DATE																																																		
QUALITY	DATE																																																		
DESIGN ENGG	DATE																																																		
JCB	02.26.08																																																		
MFG ENGG	DATE																																																		
ECO APPRV	DATE																																																		
DNg	11.25.24																																																		

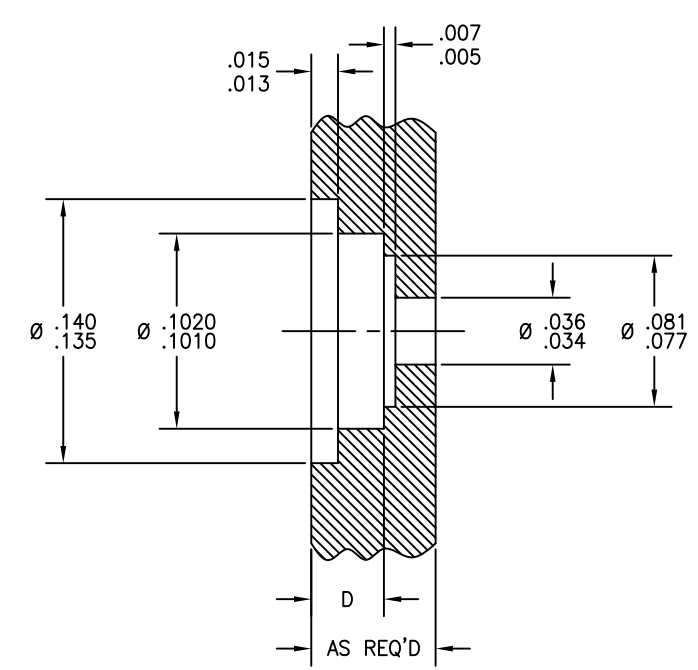
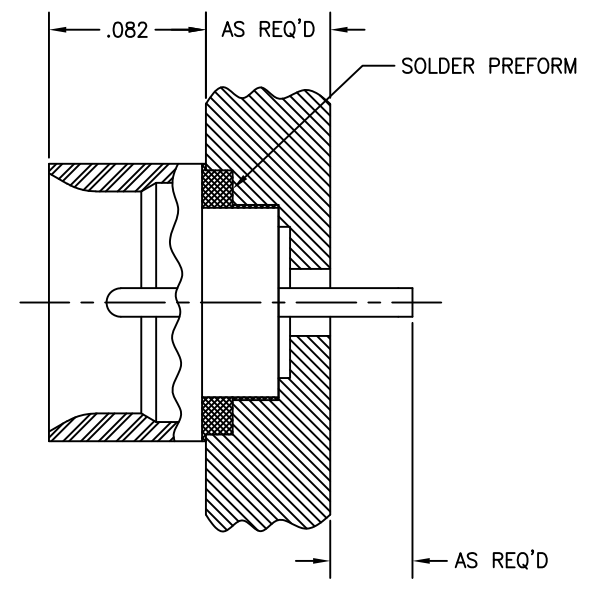
4

3

2

1

4				3				2	1
P/N	INTERFACE(S)	Ø A	(B)	(C)	D	E	F	G	
-1CC	FULL DETENT	.116±.001	.120	.040	.037/.039	.050	.050±.001	SEE DETAIL-A	
-2CC	LIMITED DETENT	.120±.001	.120	.040	.037/.039	.050	.050±.001		
-3CC	SMOOTH BORE	.125±.001	.120	.040	.037/.039	.050	.050±.001		
-4CC	FULL DETENT	.116±.001	.140	.060	.057/.059	.050	.070±.001		
-5CC	LIMITED DETENT	.120±.001	.140	.060	.057/.059	.050	.070±.001		
-6CC	SMOOTH BORE	.125±.001	.140	.060	.057/.059	.050	.070±.001		
-7CC	FULL DETENT	.116±.001	.120	.040	.037/.039	.030	.050±.001		
-8CC	LIMITED DETENT	.120±.001	.120	.040	.037/.039	.030	.050±.001		
-9CC	SMOOTH BORE	.125±.001	.120	.040	.037/.039	.030	.050±.001		
-10CC	FULL DETENT	.116±.001	.120	.040	.037/.039	.070	.050±.001		
-11CC	LIMITED DETENT	.120±.001	.120	.040	.037/.039	.070	.050±.001		
-12CC	SMOOTH BORE	.125±.001	.120	.040	.037/.039	.070	.050±.001		
-13CC	FULL DETENT	.116±.001	.120	.040	.037/.039	.090	.050±.001		
-14CC	LIMITED DETENT	.120±.001	.120	.040	.037/.039	.090	.050±.001		
-15CC	SMOOTH BORE	.125±.001	.120	.040	.037/.039	.090	.050±.001		
-16CC	FULL DETENT	.116±.001	.120	.040	.037/.039	.145	.050±.001		
-17CC	LIMITED DETENT	.120±.001	.120	.040	.037/.039	.145	.050±.001		
-18CC	SMOOTH BORE	.125±.001	.120	.040	.037/.039	.145	.050±.001		
-19CC	FULL DETENT	.116±.001	.120	.040	.037/.039	.030	.050±.001		
-20CC	LIMITED DETENT	.120±.001	.120	.040	.037/.039	.030	.050±.001		
-21CC	SMOOTH BORE	.125±.001	.120	.040	.037/.039	.030	.050±.001		
-22CC	FULL DETENT	.116±.001	.120	.040	.037/.039	.050	.050±.001		
-23CC	LIMITED DETENT	.120±.001	.120	.040	.037/.039	.050	.050±.001		
-24CC	SMOOTH BORE	.125±.001	.120	.040	.037/.039	.050	.050±.001		
-25CC	FULL DETENT	.116±.001	.120	.040	.037/.039	.070	.050±.001		
-26CC	LIMITED DETENT	.120±.001	.120	.040	.037/.039	.070	.050±.001		
-27CC	SMOOTH BORE	.125±.001	.120	.040	.037/.039	.070	.050±.001		
-28CC	FULL DETENT	.116±.001	.120	.040	.037/.039	.090	.050±.001		
-29CC	LIMITED DETENT	.120±.001	.120	.040	.037/.039	.090	.050±.001		
-30CC	SMOOTH BORE	.125±.001	.120	.040	.037/.039	.090	.050±.001		
-31CC	FULL DETENT	.116±.001	.120	.040	.037/.039	.145	.050±.001		
-32CC	LIMITED DETENT	.120±.001	.120	.040	.037/.039	.145	.050±.001		
-33CC	SMOOTH BORE	.125±.001	.120	.040	.037/.039	.145	.050±.001		
-34CC	FULL DETENT	.116±.001	.120	.040	.037/.039	.045	.050±.001		
-35CC	LIMITED DETENT	.120±.001	.120	.040	.037/.039	.045	.050±.001		
-36CC	SMOOTH BORE	.125±.001	.120	.040	.037/.039	.045	.050±.001		
-37CC	FULL DETENT	.116±.001	.120	.040	.037/.039	.135	.050±.001		
-38CC	LIMITED DETENT	.120±.001	.120	.040	.037/.039	.135	.050±.001		
-39CC	SMOOTH BORE	.125±.001	.120	.040	.037/.039	.135	.050±.001		
-40CC	FULL DETENT	.116±.001	.120	.040	.037/.039	.080	.050±.001		
-41CC	LIMITED DETENT	.120±.001	.120	.040	.037/.039	.080	.050±.001		
-42CC	SMOOTH BORE	.125±.001	.120	.040	.037/.039	.080	.050±.001		



RECOMMENDED MOUNTING HOLE

SCALE	DIRECTORY/SUB-DIRECTORY	SHEET	2	OF	2
20:1	_OUTLINE/				
SIZE	CAGE CODE	DRAWING NO.	P680	REV.	M
C	30990				