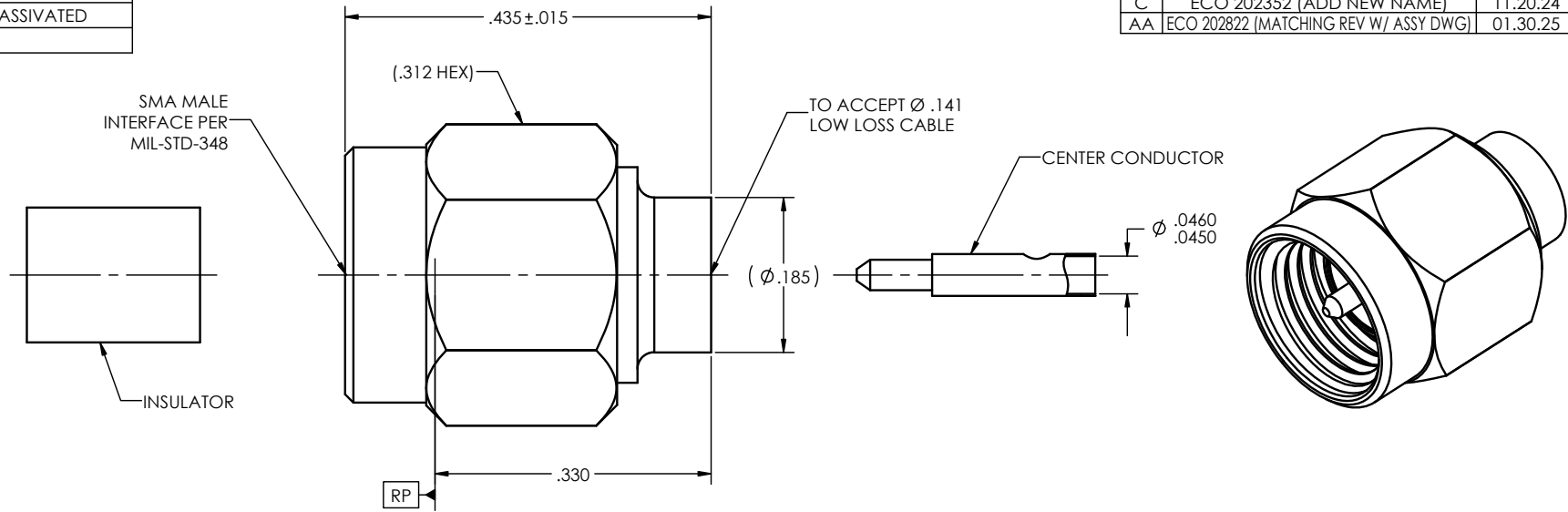


PART NO.	COUPLING NUT FINISHED
BASIC	GOLD
SF	PASSIVATED

REVISIONS			
REV.	DESCRIPTION	DATE	BY
B	ECO 19630	10.05.06	DKN
C	ECO 202352 (ADD NEW NAME)	11.20.24	DKN
AA	ECO 202822 [MATCHING REV W/ ASSY DWG]	01.30.25	DKN



NOTE(S):
CENTER CONDUCTOR AND INSULATOR TO BE PACKAGED AND SHIPPED UNASSEMBLED.

MATERIAL(S):	ELECTRICAL(S):	MECHANICAL(S):	ENVIRONMENTAL(S):
Body & Coupling Nut: 303 SST per ASTM A-582 Center Conductor: Brass Alloy per ASTM B-16 Retaining Ring: BeCu Alloy per ASTM B-196 or ASTM B-197 Gasket: Silicone Rubber per A-A-59588 Insulator: PTFE Teflon per ASTM D-1710 or ASTM D-1457	Impedance: 50 Ohms Nominal Frequency Range: DC to 18.0 GHz VSWR: 1.05 + .005 x f(GHz) Insertion Loss: .03 x √f(GHz) dB Working Voltage: 335 Vrms max @ Sea Level Dielectric Withstand Voltage: 1,000 Vrms min. RF HiPot Voltage: 670 Vrms min. @ 5MHz Corona Level: 250 Vrms @ 70,000 ft Insulation Resistance: 5,000 MegOhms min. RF Leakage: -(90 -fGHz) dB Contact Resistance: Initial: Center Contact: 3.0 Milliohms max Outer Contact: 2.0 Milliohms max After Environment: Center Contact: 4.0 Milliohms max Outer Contact: NA	Mating Characteristics: Interface per MIL-STD-348 Force to Engage & Disengage: Torque: 2 inch-lbs max Longitudinal Force: NA Connector Durability: 500 Cycles min. @ 12 cycles/minute max Permeability: Less than 2.0 mu. Coupling Proof Torque: 15 inch-pounds min. Coupling Mech. Retention: 60 pounds min.	Temperature Range: -65°C to +165°C Thermal Shock: MIL-STD-202, Method 107, Test Condition B, except high temperature shall be +115°C Moisture Resistance: MIL-STD-202, Method 106, Insulation resistance at least 200 MegOhms within 5 minutes after removal from humidity. Corrosion: MIL-STD-202, Method 101, Test Condition B Vibration: MIL-STD-202, Method 204, Test Condition D Shock: MIL-STD-202, Method 213, Test Condition I

FINISH(ES):	APPLICABLE Amphenol CDI DOCUMENTS	TOLERANCES AND NOTES	MATERIAL	SPECIFICATION	PROCUREMENT																																						
Coupling Nut: (for BASIC): Gold plate per ASTM B-488, Typer II, Code C, Class .25; over Nickel plate per SAE AMS-QQ-N-290, Class 1. (for SF): Passivated per ASTM A-967. Body & Center Conductor: Gold plate per ASTM B-488, Typer II, Code C, Class .25; over Nickel plate per SAE AMS-QQ-N-290, Class 1.	<table border="1"> <tr> <th>WORK STANDARD</th> <th>PROD INSTRUC</th> <th>ASSY INSTRUC</th> </tr> <tr> <td>NA</td> <td>NA</td> <td>A1-111</td> </tr> </table>	WORK STANDARD	PROD INSTRUC	ASSY INSTRUC	NA	NA	A1-111	EXCEPT AS NOTED DIMENSIONS ARE BY INCHES LINEAR .XX ±.015 ANGULAR ±1/2° FRACTION .XXX ±.005 INTERPRET DRAWING PER ASME Y14.5 - 2018 1. MACHINE FINISH: √RMS 2. BREAK ALL SHARP EDGES .003 MAX. 3. MACHINED FILLETS .005 MAX. 4. MACHINED SURFACES SQUARE TO RESPECTIVE AXIS WITHIN .005 INCHES PER INCH WITHIN .001 I.R. 5. MACHINED DIAMETERS CONCENTRIC WITHIN .001 I.R. 6. DIMENSIONS TO BE MET BEFORE PLATING. 7. CHAMFER ALL THREADS 45°. 8. THREADS PER H-28 9. REMOVE FRAYED EDGES ON TEFLON. 10. REMOVE ALL BURRS.	<table border="1"> <tr> <th>APPROVAL</th> <th>INITIALS</th> <th>DATE</th> </tr> <tr> <td>DRAWN BY</td> <td>IMG</td> <td>03.12.02</td> </tr> <tr> <td>CHECKED BY</td> <td>-</td> <td>-</td> </tr> <tr> <td>TEST ENGR</td> <td>-</td> <td>-</td> </tr> <tr> <td>QUALITY</td> <td>-</td> <td>-</td> </tr> <tr> <td>DESIGN ENGR</td> <td>DNg</td> <td>12.01.08</td> </tr> <tr> <td>MFG. ENGR</td> <td>-</td> <td>-</td> </tr> <tr> <td>ECO APPRV</td> <td>DNg</td> <td>02.05.25</td> </tr> </table>	APPROVAL	INITIALS	DATE	DRAWN BY	IMG	03.12.02	CHECKED BY	-	-	TEST ENGR	-	-	QUALITY	-	-	DESIGN ENGR	DNg	12.01.08	MFG. ENGR	-	-	ECO APPRV	DNg	02.05.25	<table border="1"> <tr> <th>SCALE</th> <th>SUB-DIRECTORY/OUTLINE</th> <th>SHEET</th> <th>OF</th> </tr> <tr> <td>10:1</td> <td></td> <td>1</td> <td>1</td> </tr> </table>	SCALE	SUB-DIRECTORY/OUTLINE	SHEET	OF	10:1		1	1	12900 Alondra Blvd. Cerritos, CA 90703 Amphenol CDI SMA MALE STRAIGHT TO Ø .141 LOW-LOSS CABLE C 30990 5285-3 AA
WORK STANDARD	PROD INSTRUC	ASSY INSTRUC																																									
NA	NA	A1-111																																									
APPROVAL	INITIALS	DATE																																									
DRAWN BY	IMG	03.12.02																																									
CHECKED BY	-	-																																									
TEST ENGR	-	-																																									
QUALITY	-	-																																									
DESIGN ENGR	DNg	12.01.08																																									
MFG. ENGR	-	-																																									
ECO APPRV	DNg	02.05.25																																									
SCALE	SUB-DIRECTORY/OUTLINE	SHEET	OF																																								
10:1		1	1																																								