

8 7 6 5 4 3 2 1

REVISION HISTORY					
ECO	REV.	DESCRIPTION	DRAWN BY	APPROVAL	DATE
	03	REVISED TOLERANCE TO BE +0.04 / -0.06	James		6/7/2021
	04	UPDATE TEST CONDITION AND VALUE	Evan		29/8/2022
	05	CHANGE P/N, WAS TMB-A8F2-3L1	Evan		08/12/2022
	06	UPDATE PCB DIMENSION	Matthew		10/11/2023

CONNECTOR PARTS
 CENTER CONTACT
 OUTER CONTACT PCB SIDE
 OUTER CONTACT RPC-1.85 SIDE
 DIELECTRIC

MATERIAL
 CuBe
 CuBe or equiv.
 CuBe or equiv.
 PEEK / PTFE

PLATING
 gold plated
 gold plated
 gold plated

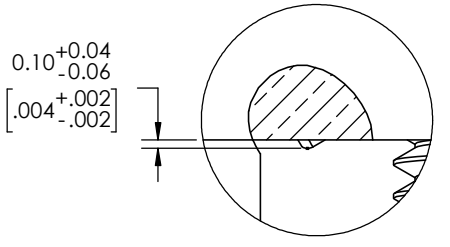
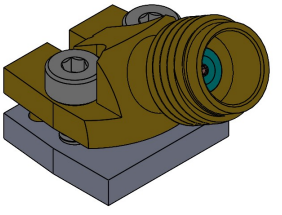
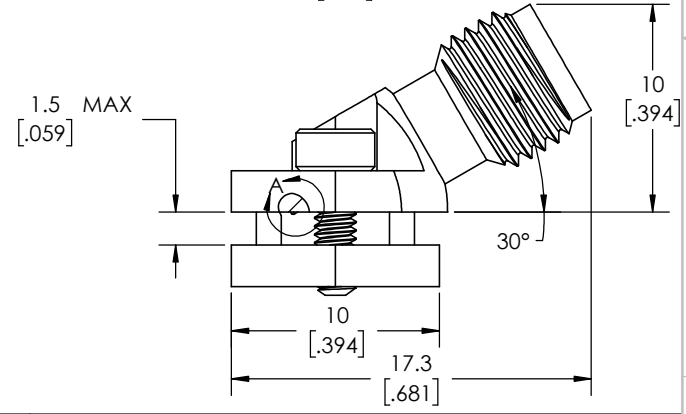
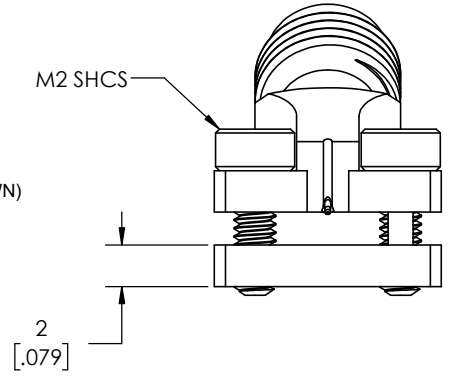
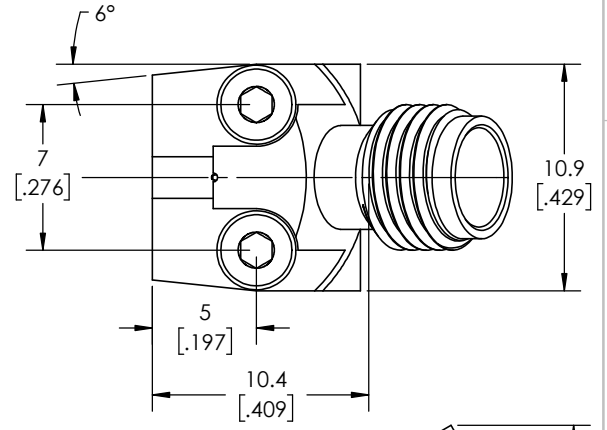
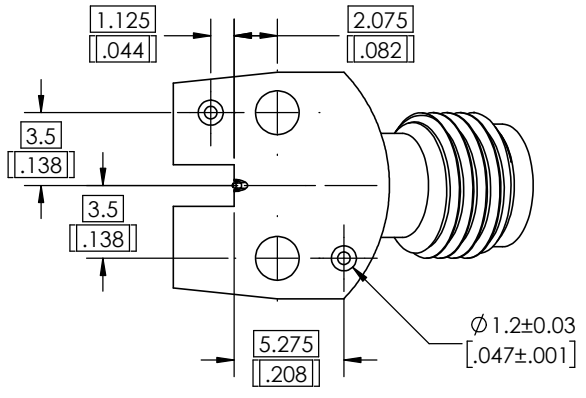
ELECTRICAL DATA
 IMPEDANCE 50Ω
 FREQUENCY DC TO 67 GHz
 RETURN LOSS:
 ≥ 19 dB, DC TO 17 GHz
 ≥ 15 dB, 17 TO 41 GHz
 ≥ 10 dB, 41 TO 50 GHz
 ≥ 8 dB, 50 TO 60 GHz
 ≥ 5 dB, 60 TO 67 GHz
 INSULATION RESISTANCE ≥ 5 GΩ
 TEST VOLTAGE 500 V rms
 WORKING VOLTAGE 150 V rms

INSERTION LOSS:
 -1dB:DC-4GHz
 -2dB:4GHz-12GHz
 -3dB:12GHz-24GHz
 -4dB:24GHz-36GHz
 -5dB:36GHz-48GHz
 -6dB:48GHz-54GHz
 -7dB:54GHz-67GHz

MECHANICAL DATA
 MATING CYCLES PCB SIDE ≥300
 MATING CYCLES RPC-1.85 SIDE ≥500
 COUPLING TEST RPC-1.85 1.65 Nm
 RECOMMENDED TORQUE ALLEN SCREW 1.5 0.20 Nm TO 0.30 Nm
 PCB THICKNESS MAX. 1.5 mm TYPICAL; DIMENSION EXPANDABLE WITH LONGER SCREWS

ENVIRONMENTAL DATA
 TEMPERATURE RANGE -40 ° C TO +85 ° C
 THERMAL SHOCK IEC 61169-1, SUBCLAUSE 9.4.4
 CORROSION IEC 61169-1, SUBCLAUSE 9.4.6
 VIBRATION IEC 61169-1, SUBCLAUSE 9.3.3
 SHOCK IEC 61169-1, SUBCLAUSE 9.3.14
 MOISTURE RESISTANCE IEC 61169-1, SUBCLAUSE 9.4.3
 MAX SOLDERING TEMP N/A (CONNECTOR IS ONLY SCREWED DOWN)
 RoHS COMPLIANT

FOR QUESTIONS PLEASE CONTACT SALES@AMPHENOLCDI.COM



DETAIL A
 SCALE 16 : 1

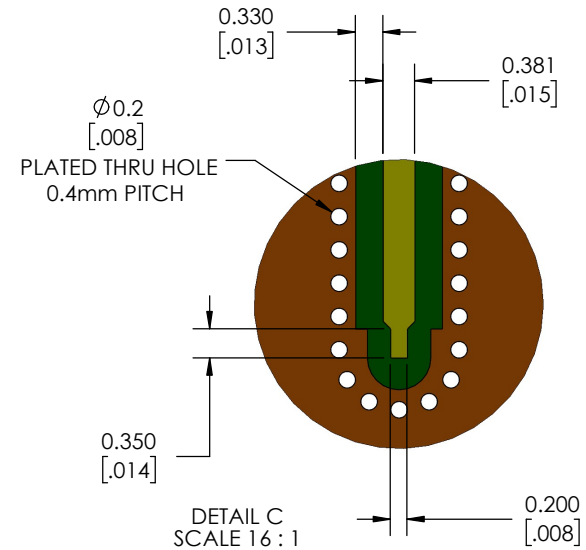
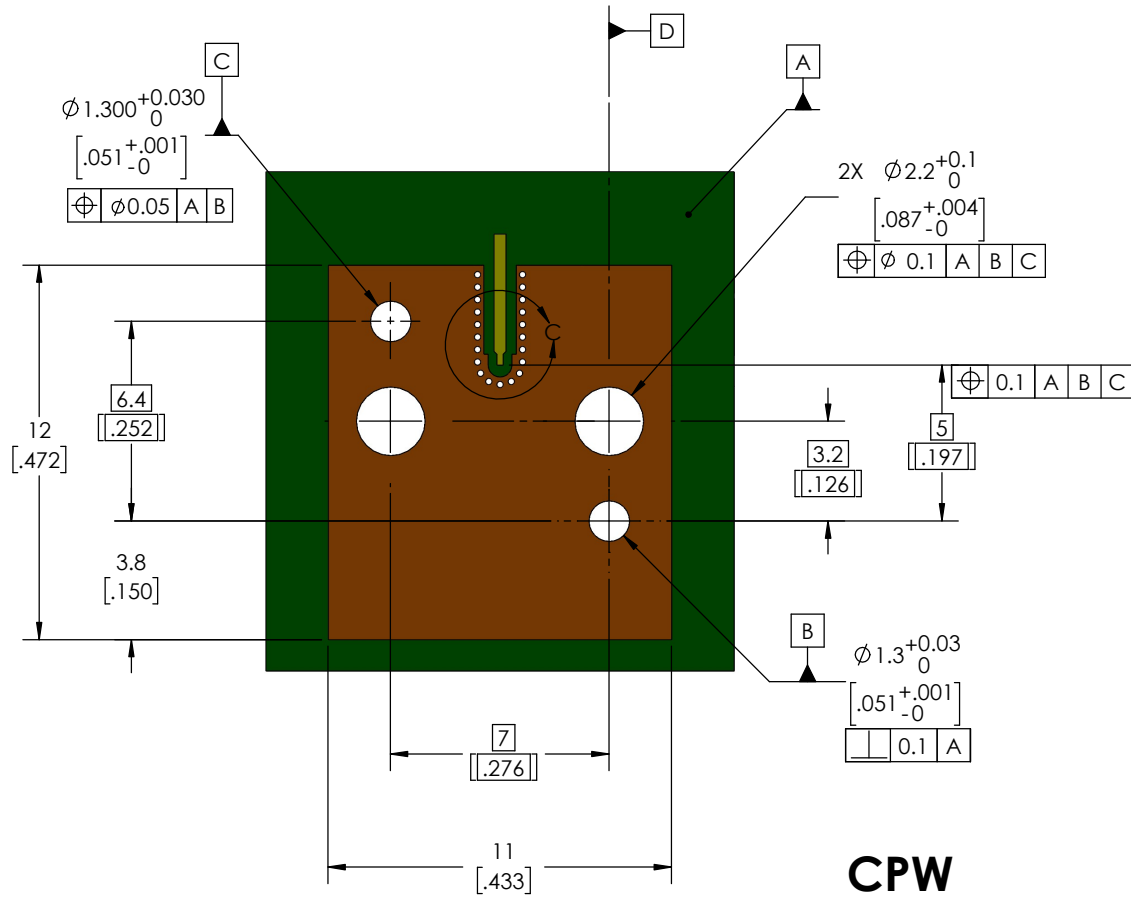
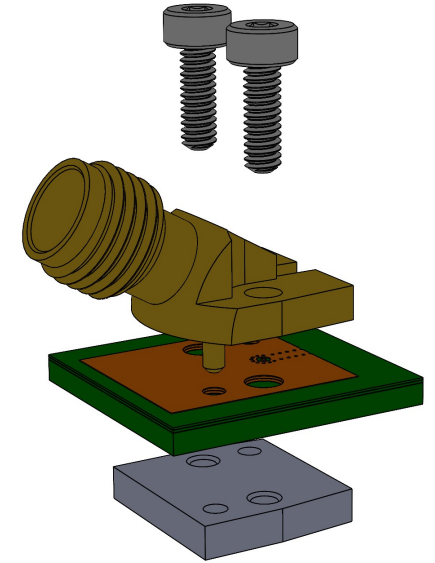
DIMENSIONS ARE IN MILLIMETERS [INCHES] ± TOLERANCES UNLESS OTHERWISE NOTED					THIRD ANGLE PROJECTION		Amphenol			
.X	.XX	.XXX	.XXXX	ANGLE			TITLE 1.85 ANGLED CONNECTOR, JACK			
0.3mm [.012"]	0.15mm [.006"]	0.050mm [.002"]	0.010mm [.0004"]	0.5	DESIGN ENGR: R BEDIENT 04/18/19					
					DESIGNED BY: R BEDIENT 04/18/19					
					PRODUCT:					
NEXT ASSY.					USED ON		SIZE B	CAGE CODE 7M294	PART NUMBER TMB-A8F2-3L1	REV 06
APPLICATION							SCALE: 4:1		DO NOT SCALE DRAWING 1 OF 3	

THE INFORMATION CONTAINED HEREIN IS PROPRIETARY TO AMPHENOL. AND SHALL IN NO WAY BE REPRODUCED OR DISCLOSED IN WHOLE OR IN PART OR USED FOR ANY DESIGN OR MANUFACTURE EXCEPT WHEN SUCH USER POSSESSES DIRECT, WRITTEN AUTHORIZATION FROM AMPHENOL.



8 7 6 5 4 3 2 1

THERE IS A WIDE VARIETY OF TRANSMISSIONLINE TOPOLOGIES AND PCB-PARAMETERS LIKE PERMITTIVITY, SUBSTRATE THICKNESS AND ALSO THE BOARD-STACKUP APPLIED BY CUSTOMERS. THESE PARAMETERS HAVE A STRONG IMPACT ON THE HIGH FREQUENCY PERFORMANCE OF THE MOUNTED CONNECTOR. PLEASE NOTE, THAT THE GIVEN LAYOUT IS NOT OPTIMISED TO FIT ALL OF THE POSSIBLE BOARD CONFIGURATIONS REGARDING RF-PERFORMANCE. IN ORDER TO ASSURE OPTIMUM HIGH FREQUENCY PERFORMANCE OF THE CONNECTOR, AN RF-ANALYSIS OF THE CONNECTOR TO BOARD TRANSITION IS RECOMMENDED.

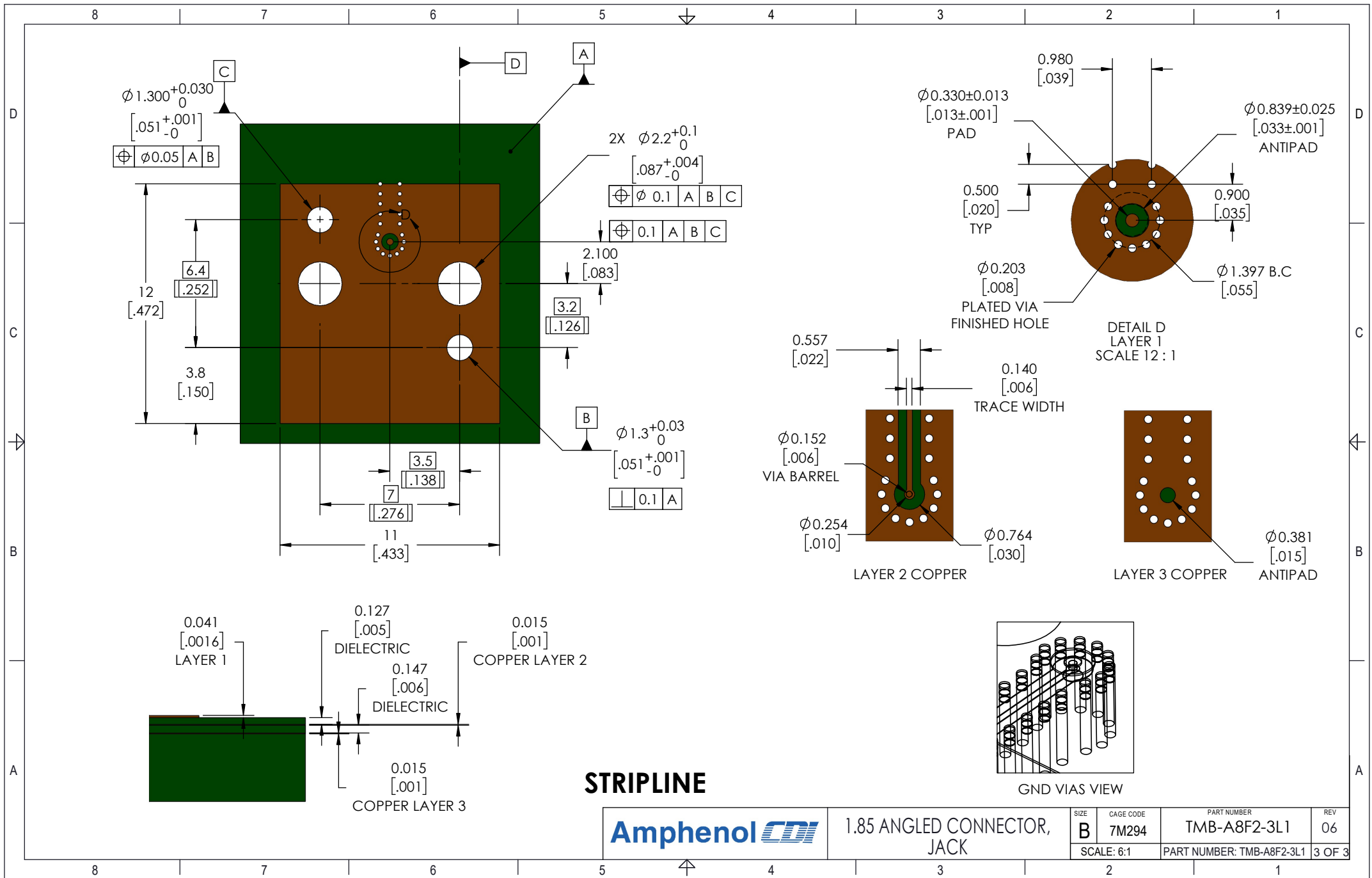


CPW

Amphenol *CDI*

1.85 ANGLED CONNECTOR,
JACK

SIZE	CAGE CODE	PART NUMBER	REV
B	7M294	TMB-A8F2-3L1	06
SCALE: 6:1		PART NUMBER: TMB-A8F2-3L1	2 OF 3



SIZE	CAGE CODE	PART NUMBER	REV
B	7M294	TMB-A8F2-3L1	06
SCALE: 6:1	PART NUMBER: TMB-A8F2-3L1		3 OF 3