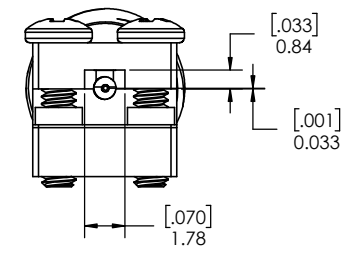
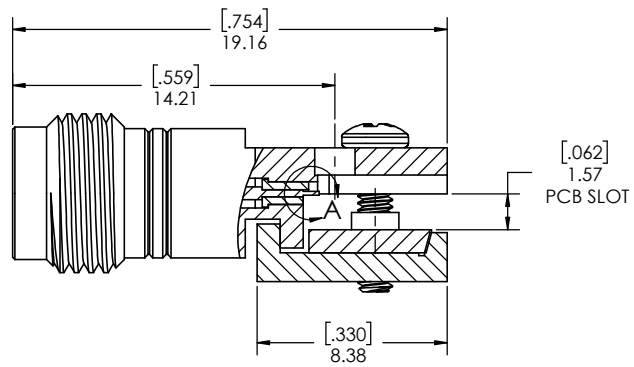
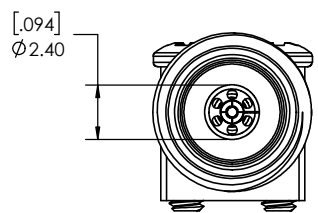
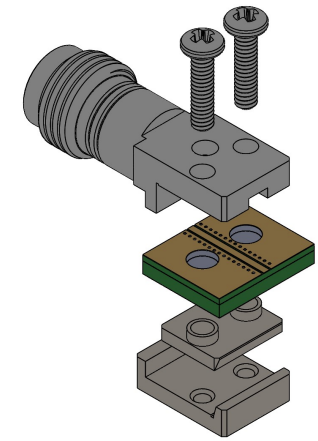
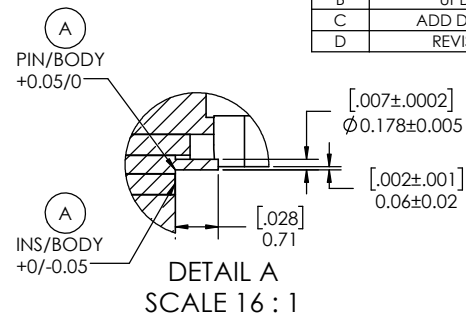
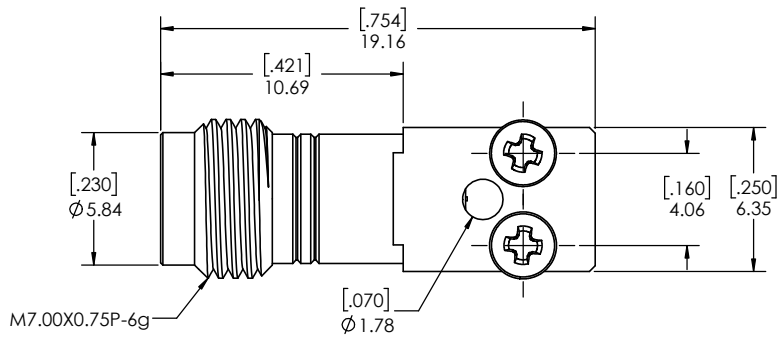
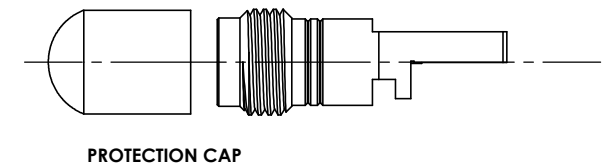
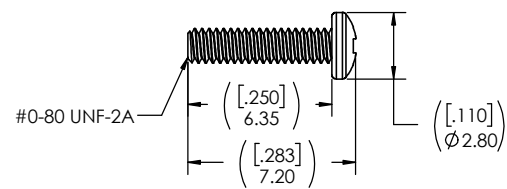


REVISIONS			
REV.	DESCRIPTION	DATE	DWN
-	INITIAL RELEASE	8/31/2020	FY
A	ADD MISSING DIMENSION	12/3/2020	FY
B	UPDATE FOOTPRINT	1/14/2021	FY
C	ADD DIMENSION 0.06mm	9/2/2021	FY
D	REVISED DIMENSIONS	9/8/2021	JZ



- NOTE(S):
1. These characteristics are typical and for reference.
 2. For questions please contact sales@amphenolcdi.com
 3. See sheet 2 for standard PCB interface definition.
 4. See sheet 3 for non-standard PCB interface definition.



MATERIAL(S):	ELECTRICAL(S):	MECHANICAL(S):	ENVIRONMENTAL(S):
---------------------	-----------------------	-----------------------	--------------------------

Body/Screws: Stainless Steel
 Locking Block: Brass
 Center Conductor: Beryllium Copper
 Insulator: PCTFE, white
 PTFE, White
 RoHS Compliant

Protective Cap: Soft PVC
 Color: Blue

Impedance: 50 Ohms Nominal
 Frequency Range: DC to 50 GHz
 VSWR: 1.30 max at 50 GHz
 Working Voltage: 500 V RMS max @ Sea Level
 Dielectric Withstand Voltage: 500 V RMS max.
 Insulation Resistance: 5000 megohms min.
 Contact Resistance:
 Initial:
 Center Contact: 1.5 Milliohms max
 Outer Contact: 0.8 Milliohms max

Mating Characteristics:
 Interface per MIL-STD-348
 Force to Engage & Disengage:
 Torque: 2 inch-pounds max
 Longitudinal Force: NA
 Connector Durability:
 500 Cycles min.
 Permeability: Less than 2.0 mu.
 Center Contact Retention:
 Axial Force: 6 pounds min.
 Radial Force: NA

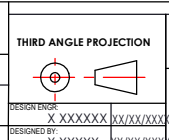
Temperature Range: -55°C to +120°C
 Moisture Resistance:
 MIL-STD-202, Method 103, Test Condition B
 Corrosion:
 MIL-STD-202, Method 101, Test Condition B
 Vibration:
 MIL-STD-202, Method 204, Test Condition A
 Shock:
 MIL-STD-202, Method 213, Test Condition 1

FINISH(ES):

Body/Screw: Passivated
 Locking Block: Nickel plating
 Center Conductor: Becu ,Gold Plating

DIMENSIONS ARE IN MILLIMETERS [INCHES] ± TOLERANCES UNLESS OTHERWISE NOTED

.X	.XX	.XXX	.XXXX	ANGLE
0.3mm [.012"]	0.15mm [.006"]	0.050mm [.002"]	0.010mm [.0004"]	0.5



Amphenol CDI

TITLE: Edge Launch, Narrow Body, Solderless, 2.40mm, Connector

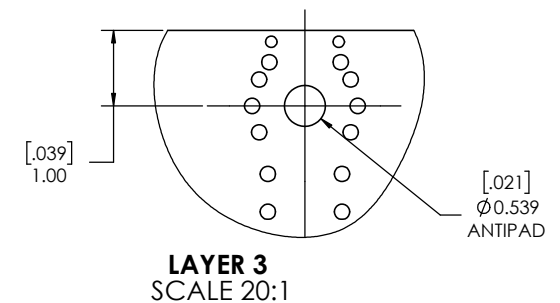
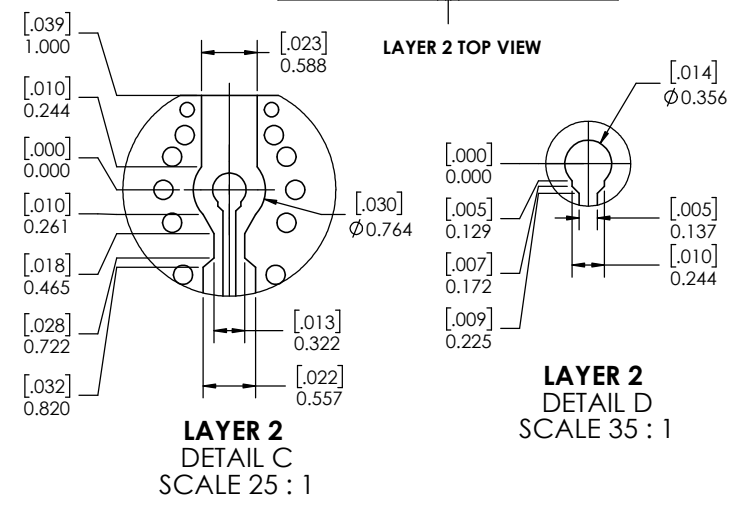
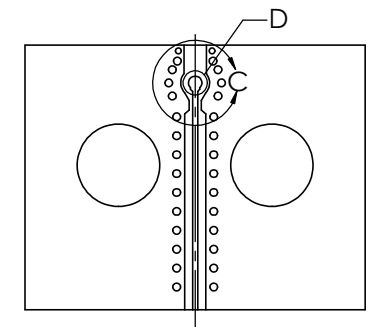
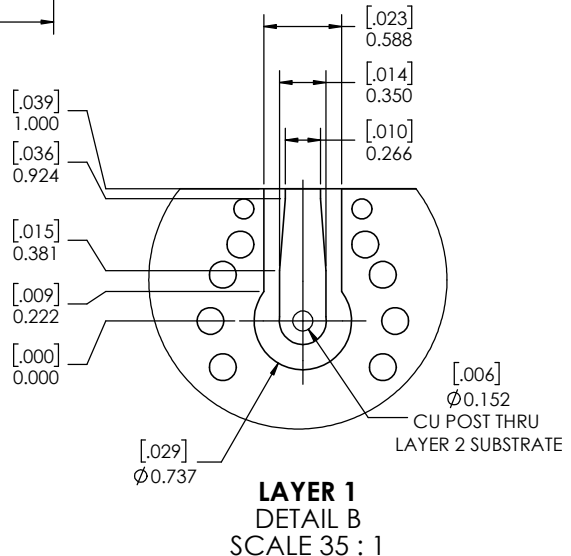
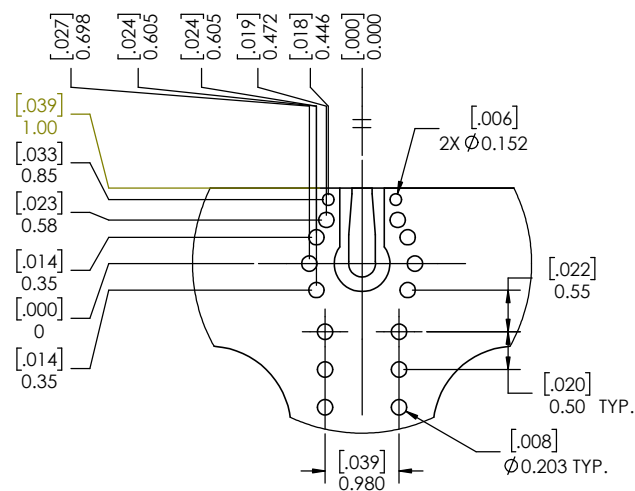
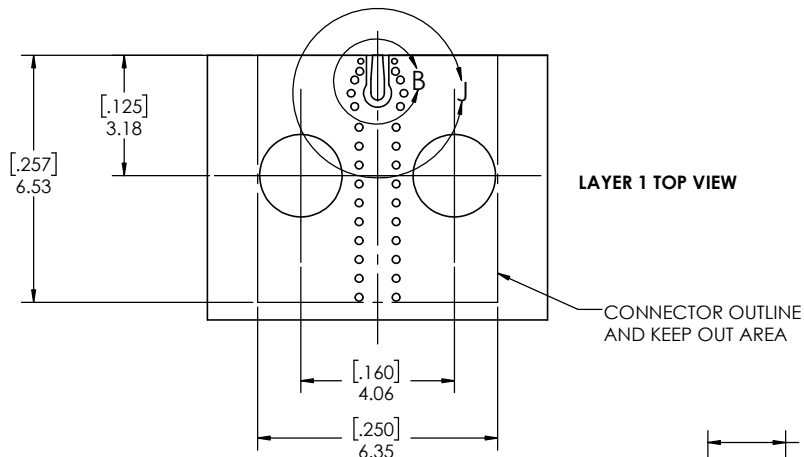
THE INFORMATION CONTAINED HEREIN IS PROPRIETARY TO AMPHENOL, AND SHALL IN NO WAY BE REPRODUCED OR DISCLOSED IN WHOLE OR IN PART OR USED FOR ANY DESIGN OR MANUFACTURE EXCEPT WHEN SUCH USER POSSESSES DIRECT, WRITTEN AUTHORIZATION FROM AMPHENOL.



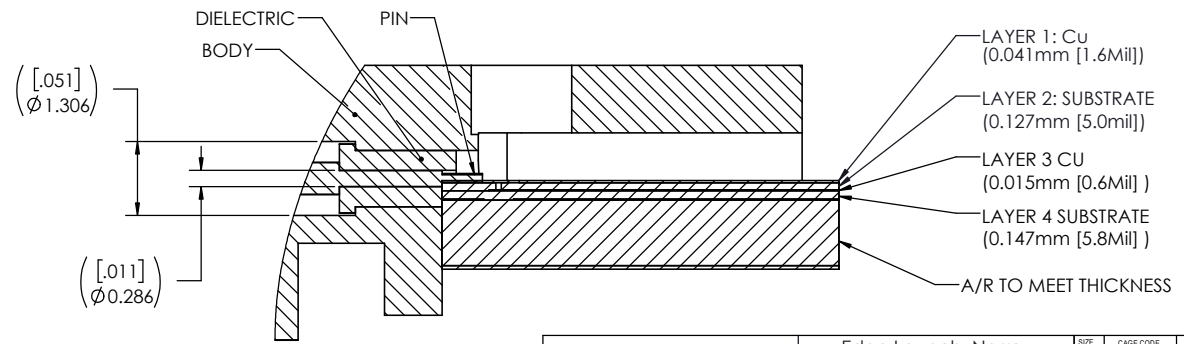
NEXT ASSY.	USED ON
APPLICATION	

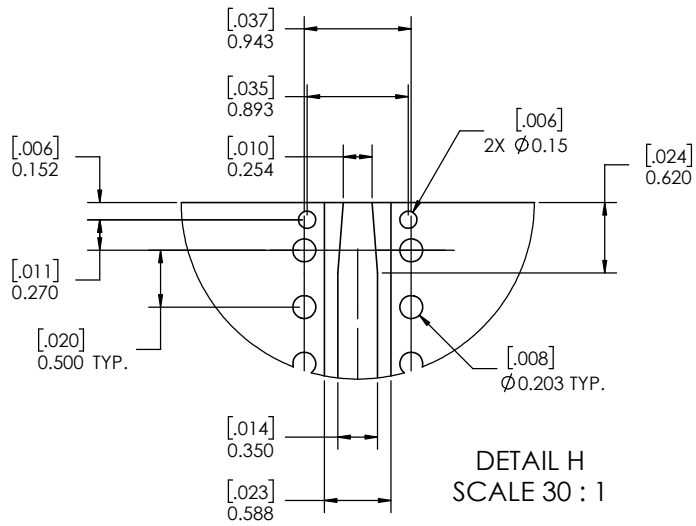
DESIGNER: X XXXXXX	XXX/XX/XXX
DESIGNED BY: X XXXXXX	XX/XX/XXX
PRODUCT:	
QUALITY:	
MFG:	

SIZE: C	CAGE CODE: 7M294	PART NUMBER: TMB-E4F2-1L1-01	REV: D
SCALE: 12:1	DO NOT SCALE DRAWING		1 OF 3

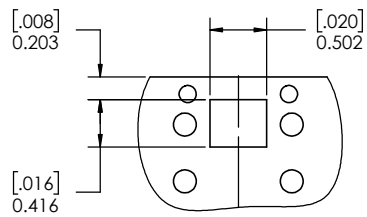
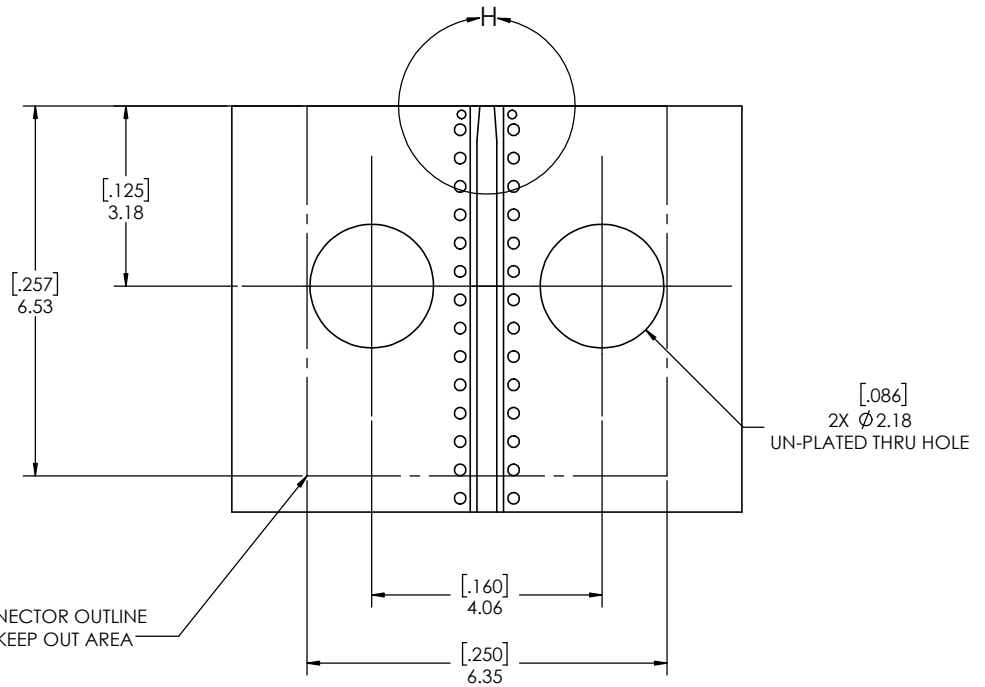


**FOOTPRINT OF STRIPLINE
(REF ONLY)**

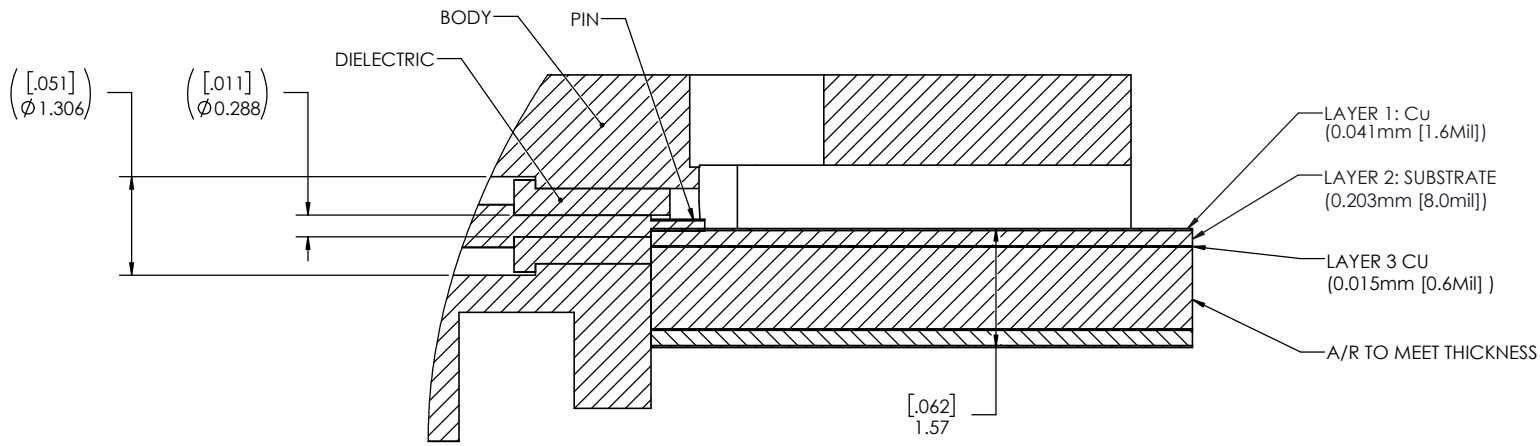




DETAIL H
SCALE 30 : 1



LAYER 3 CUTOUT



FOOT PRINT OF CPW
(REF ONLY)



Edge Launch, Narrow
Body, Solderless, 2.40mm,
Connector

SIZE C	CAGE CODE 7M294	PART NUMBER TMB-E4F2-1L1-01	REV D
SCALE: 10:1		PART NUMBER: TMB-E4F2-1L1-01 3 OF 3	