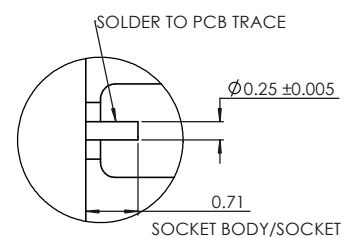
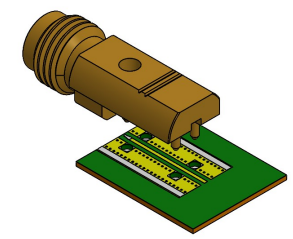
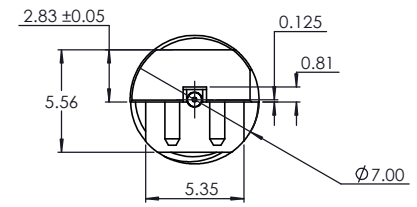
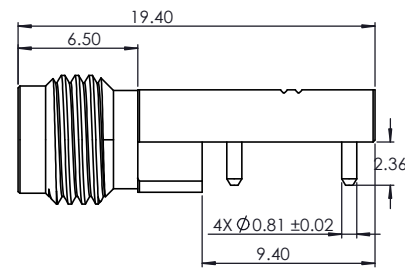
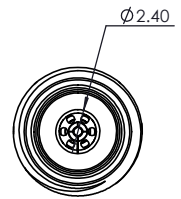
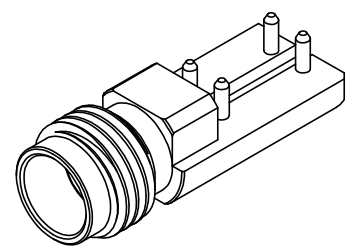
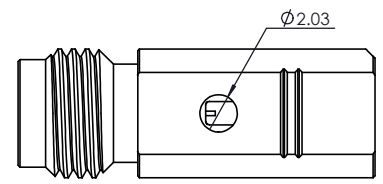
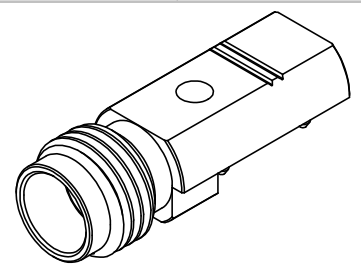
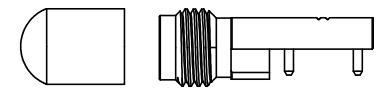
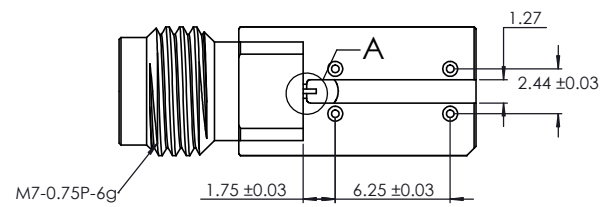


REV.	DESCRIPTION	DATE	BY
01	Adjust to Blue cap		James
02	Change temperature range		James
03	replace the page2		James
04	UPDATE TO 04 INTERNAL		Evan



DETAIL A
SCALE 20 : 1



PROTECTIVE CAP

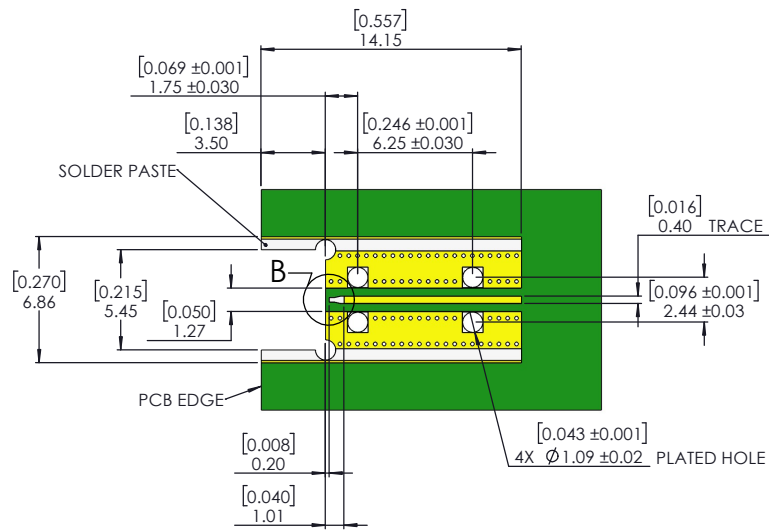
NOTE(S):
 1. These characteristics are typical and for reference.
 2. See sheet 2 for PCB definition.
 3. For questions please contact sales@amphenolcdi.com

MATERIAL(S) :	ELECTRICAL(S) :	MECHANICAL(S) :	ENVIRONMENTAL(S) :
---------------	-----------------	-----------------	--------------------

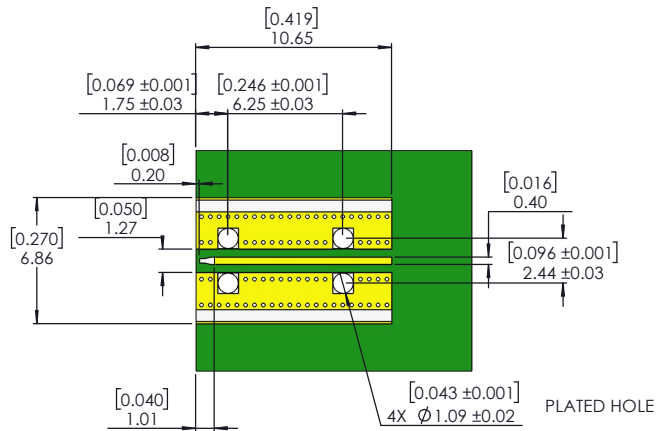
Body: BRASS Center Conductor: Beryllium Copper Insulator: Insulator : PTFE, white Protective Cap: Soft PVC Color: Blue	Impedence: 50 Ohms Nominal Frequency Range: DC to 50 GHz VSWR: 1.3:1 max at 50 GHz Working Voltage: 400 Vrms max @ Sea Level Dielectric Withstand Voltage: 500 Vrms max. Insulation Resistance: 5000 Megohms min. Contact Resistance: Initial: Center Contact: 1.5 Milliohms max Outer Contact: 0.8 Milliohms max	Mating Characteristics: Interface per MIL-STD-348 Force to Engage & Disengage: Torque: 2 inch-pounds max Longitudinal Force: NA Connector Durability: 500 Cycles min. Permeability: Less than 2.0 mu. Center Contact Retention: Axial Force: 6 pounds min. Radial Force: NA	Temperature Range: -55 C to +120 C Moisture Resistance: MIL-STD-202, Method 103, Test Condition B Corrosion: MIL-STD-202, Method 101, Test Condition B Vibration: MIL-STD-202, Method 204, Test Condition A Shock: MIL-STD-202, Method 213, Test Condition 1
--	---	--	---

FINISH(ES)	DIMENSIONS ARE IN MILLIMETERS [INCHES] ± TOLERANCES UNLESS OTHERWISE NOTED	THIRD ANGLE PROJECTION	Amphenol CDI
------------	---	------------------------	--------------

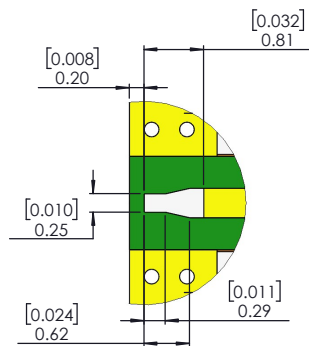
Body: Gold Plating Center Conductor: Gold Plating	<table border="1"> <thead> <tr> <th>.X</th> <th>.XX</th> <th>.XXX</th> <th>.XXXX</th> <th>ANGLE</th> </tr> </thead> <tbody> <tr> <td>0.3mm [.012"]</td> <td>0.15mm [.006"]</td> <td>0.050mm [.002"]</td> <td>0.010mm [.0004"]</td> <td>0.5</td> </tr> </tbody> </table>	.X	.XX	.XXX	.XXXX	ANGLE	0.3mm [.012"]	0.15mm [.006"]	0.050mm [.002"]	0.010mm [.0004"]	0.5		Amphenol CDI TITLE: 2.40mm STR. JACK EDGE MOUNT (WITH FEET) , PCB CONNECTOR, WITH .010" PIN
.X	.XX	.XXX	.XXXX	ANGLE									
0.3mm [.012"]	0.15mm [.006"]	0.050mm [.002"]	0.010mm [.0004"]	0.5									
THE INFORMATION CONTAINED HEREIN IS PROPRIETARY TO AMPHENOL AND SHALL IN NO WAY BE REPRODUCED OR DISCLOSED IN WHOLE OR IN PART OR USED FOR ANY DESIGN OR MANUFACTURE EXCEPT WHEN SUCH USER POSSESSES DIRECT, WRITTEN AUTHORIZATION FROM AMPHENOL.		DESIGN ENGR: X XXXXXX DESIGNED BY: X XXXXXX PRODUCT: XX/XX/XXXX QUALITY:	SIZE: C CAGE CODE: 7M294 PART NUMBER: TMB-E4FS-1ST REV: 04 SCALE: 2:1 DO NOT SCALE DRAWING APPLICATION: NEXT ASSY. USED ON										



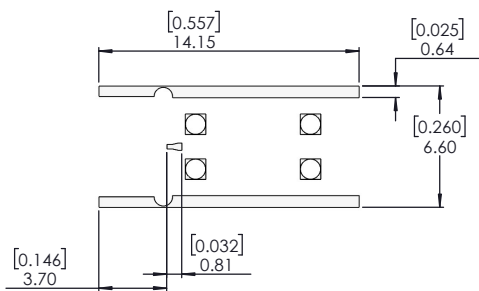
OPTION 1



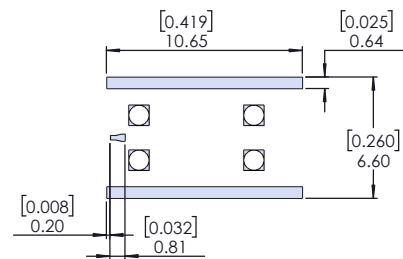
OPTION 2



DETAIL B
SCALE 20 : 1



SOLDER STENCIL



SOLDER STENCIL

TMB-EXFS-1ST
FOOT PRINT

Amphenol 	2.40mm STR. JACK EDGE MOUNT (WITH FEET) , PCB CONNECTOR, WITH .010" PIN		SIZE C	CAGE CODE 7M294	PART NUMBER TMB-E4FS-1ST	REV 04
	SCALE: 2:1		PART NUMBER: TMB-E4FS-1ST 2 OF 2			