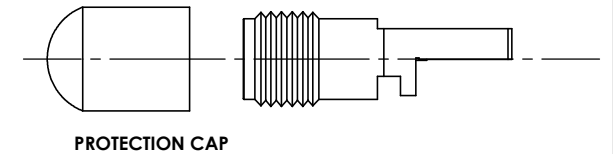
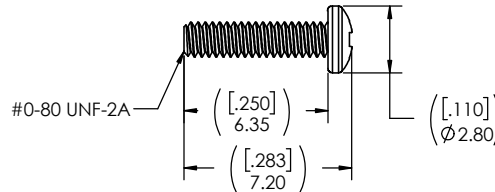
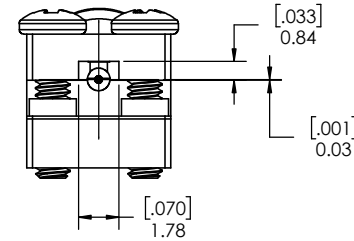
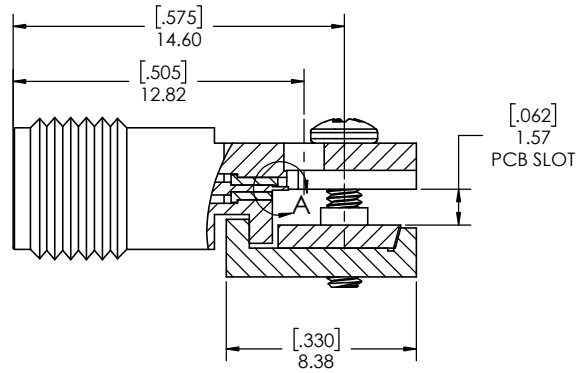
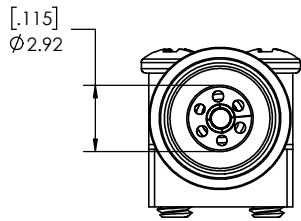
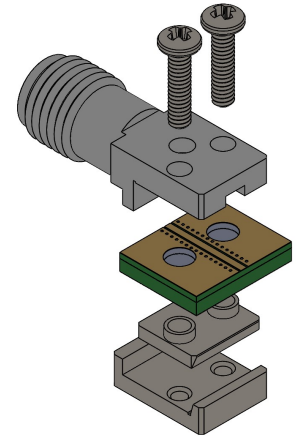
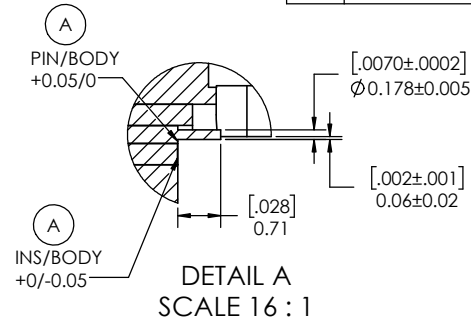
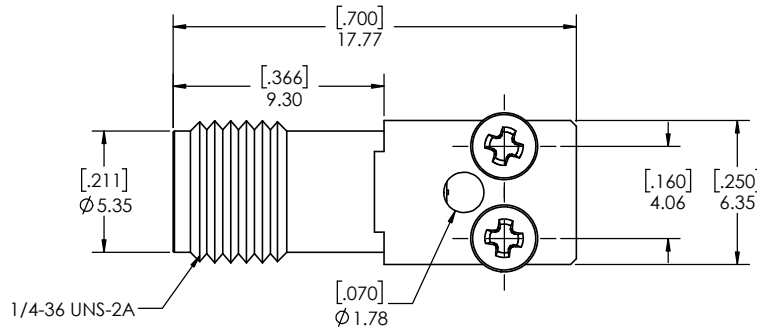


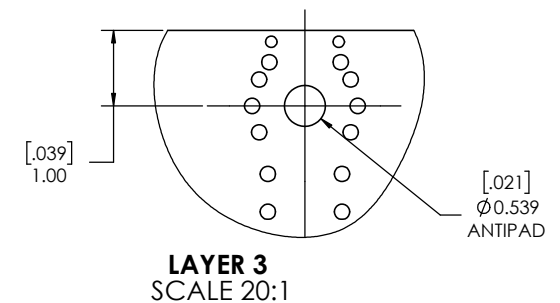
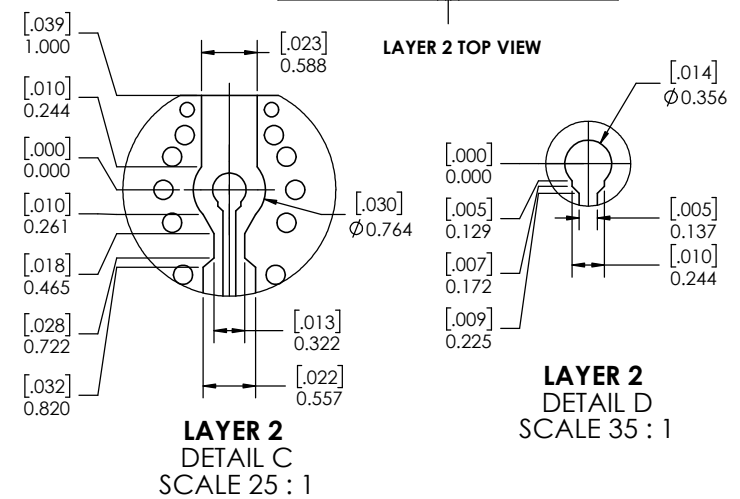
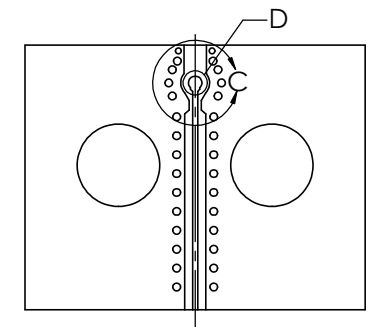
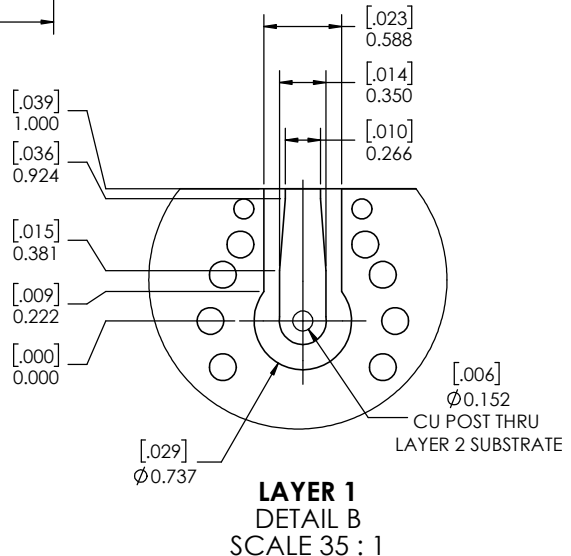
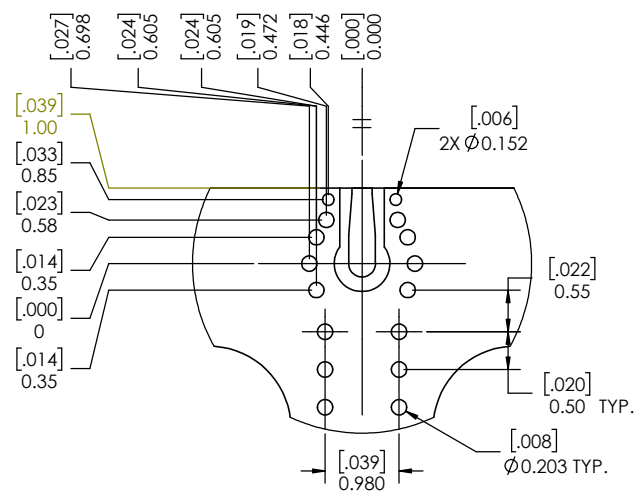
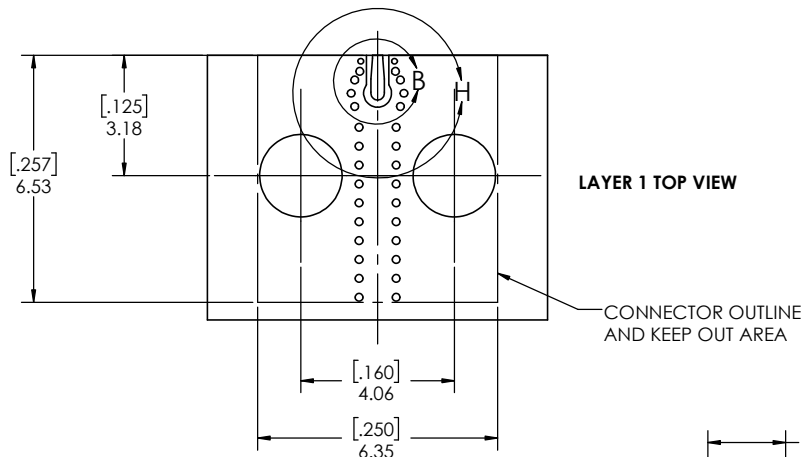
REVISIONS			
REV.	DESCRIPTION	DATE	DWN
-	INITIAL RELEASE	8/31/2020	FY
A	ADD MISSING DIMENSION	12/3/2020	FY
B	UPDATE FOOTPRINT	1/14/2021	FY
C	ADD DIMENSION 0.06	9/2/2021	FY
D	REVISED DIMENSIONS	9/8/2021	JZ



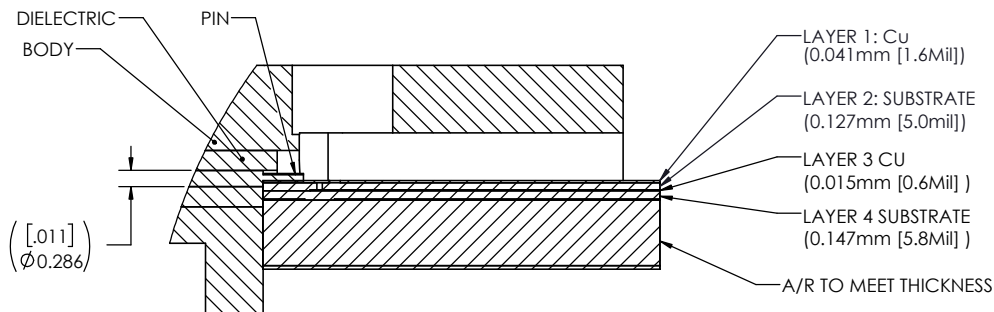
- NOTE(S):
1. These characteristics are typical and for reference.
  2. For questions please contact sales@amphenolcdi.com
  3. See sheet 2 for PCB interface definition.

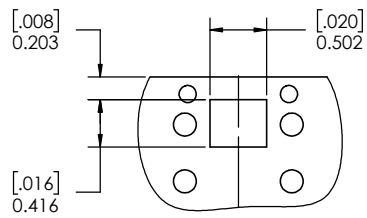
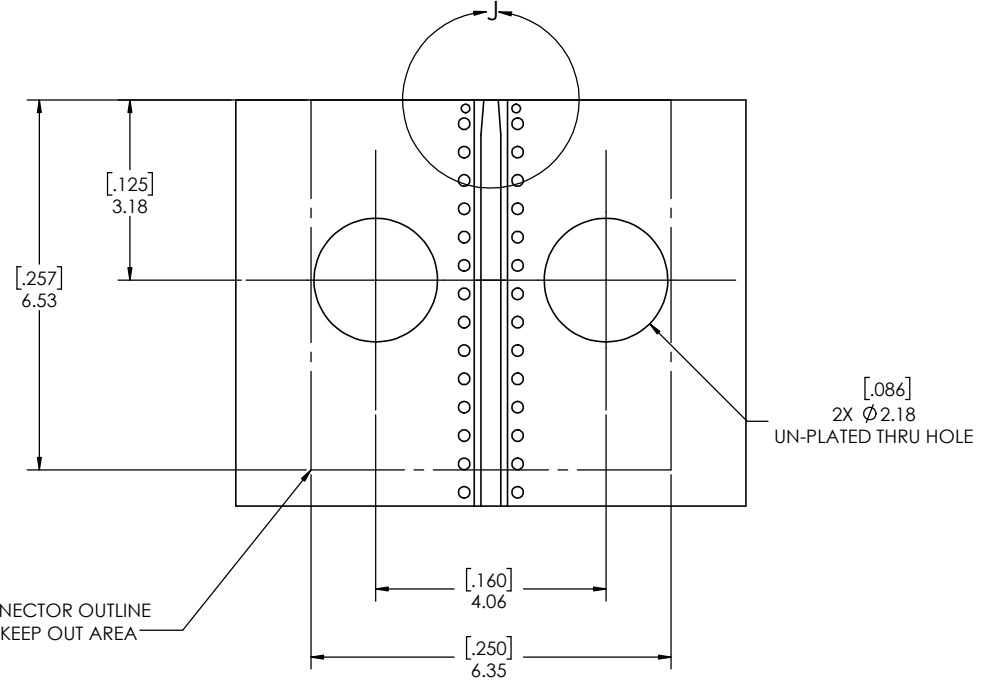
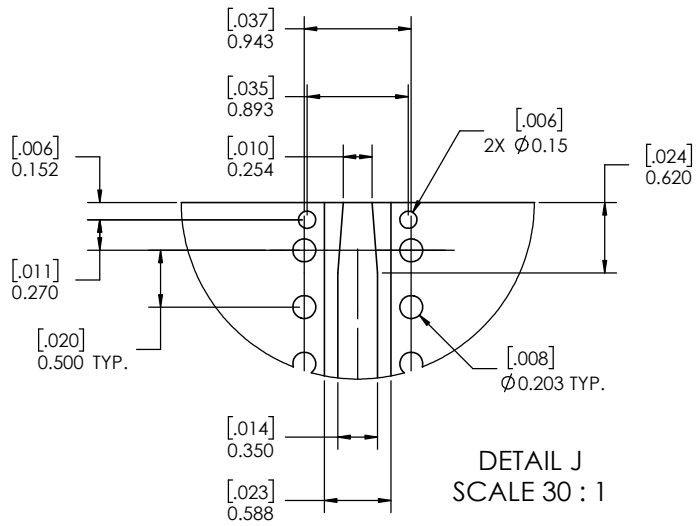
MATERIAL(S) :	ELECTRICAL(S) :	MECHANICAL(S) :	ENVIRONMENTAL(S) :
Body/Screws: Stainless Steel Locking Block: Brass Center Conductor: Beryllium Copper Insulator: PCTFE, white PTFE, WHITE RoHS Compliant Protective Cap: Soft PVC Color: Yellow	Impedence: 50 Ohms Nominal Frequency Range: DC to 40 GHz VSWR: 1.30 max at 40 GHz Working Voltage: 500 V RMS max @ Sea Level Dielectric Withstand Voltage: 500 V RMS max. Insulation Resistance: 5000 megaohms min. Contact Resistance: Initial: Center Contact: 1.5 Milliohms max Outer Contact: 0.8 Milliohms max	Mating Characteristics: Interface per MIL-STD-348 Force to Engage & Disengage: Torque: 2 inch-pounds max Longitudinal Force: NA Connector Durability: 500 Cycles min. Permeability: Less than 2.0 mu. Center Contact Retention: Axial Force: 6 pounds min. Radial Force: NA	Temperature Range: -55°C to +120°C Moisture Resistance: MIL-STD-202, Method 103, Test Condition B Corrosion: MIL-STD-202, Method 101, Test Condition B Vibration: MIL-STD-202, Method 204, Test Condition A Shock: MIL-STD-202, Method 213, Test Condition 1
FINISH(ES) :			

Body/Screw: Passivated Locking Block: Nickel plating Center Conductor: Becu ,Gold Plating	<b>DIMENSIONS ARE IN MILLIMETERS [INCHES]</b> <b>± TOLERANCES UNLESS OTHERWISE NOTED</b>				<b>THIRD ANGLE PROJECTION</b> 		
	.X	.XX	.XXX	.XXXX			ANGLE
	0.3mm [.012"]	0.15mm [.006"]	0.050mm [.002"]	0.010mm [.0004"]	0.5	DESIGNER: X XXXXXX XX/XX/XXX DESIGNED BY: X XXXXXX XX/XX/XXX PRODUCT: [ ] QUALITY: [ ] MFG: [ ]	SIZE: C CASE CODE: 7M294 PART NUMBER: TMB-E9F2-1L1-01 SCALE: 12:1 DO NOT SCALE DRAWING
THE INFORMATION CONTAINED HEREIN IS PROPRIETARY TO AMPHENOL, AND SHALL IN NO WAY BE REPRODUCED OR DISCLOSED IN WHOLE OR IN PART OR USED FOR ANY DESIGN OR MANUFACTURE EXCEPT WHEN SUCH USER POSSESSES DIRECT, WRITTEN AUTHORIZATION FROM AMPHENOL.				APPLICATION: NEXT ASSY. USED ON		REV: D 1 OF 3	

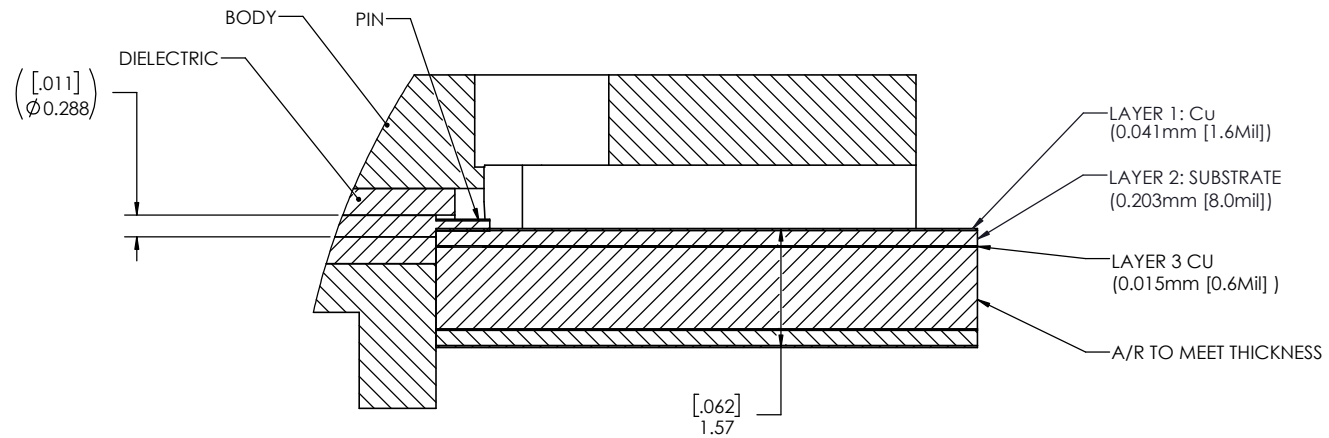


**FOOTPRINT OF STRIPLINE  
(REF ONLY)**





LAYER 3 CUTOUT



FOOT PRINT OF CPW (REF ONLY)



Edge Launch, Narrow Body, Solderless, 2.92mm, Connector

SIZE <b>C</b>	CAGE CODE <b>7M294</b>	PART NUMBER <b>TMB-E9F2-1L1-01</b>	REV <b>D</b>
SCALE: 10:1		PART NUMBER: TMB-E9F2-1L1-01 3 OF 3	