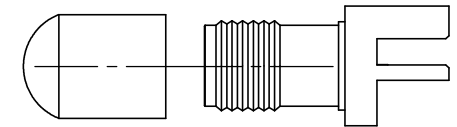
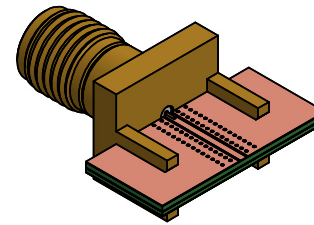
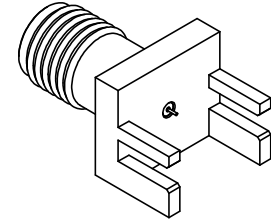
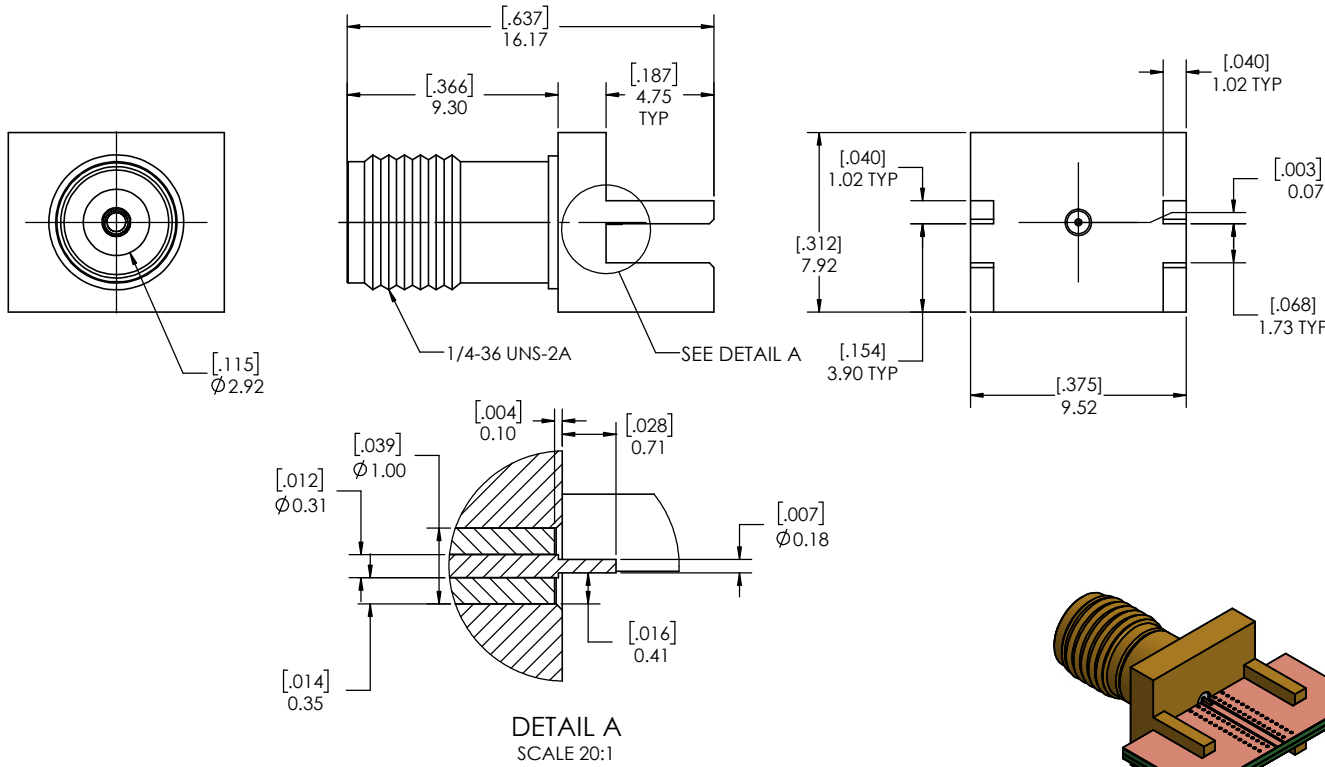


REVISIONS			
REV.	DESCRIPTION	DATE	APPROVED
-	INITIAL RELEASE	07/03/2018	MM
1	UPDATED PART NUMBER	10/24/2018	DL
2	ADDED SHEET 2 PCB DEFINITION	2/20/2019	PV
3	ADDED SECTION VIEW	3/12/2019	PV

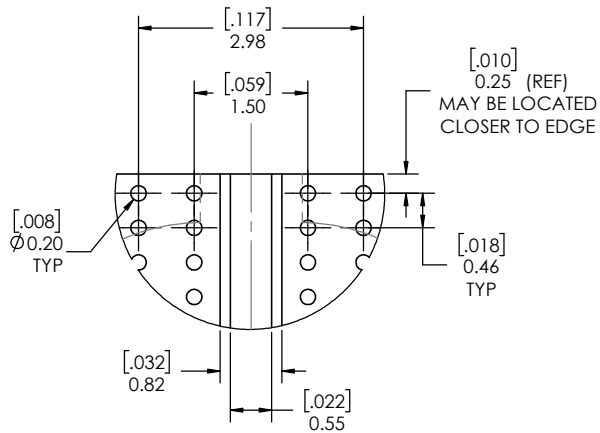


PROTECTION CAP

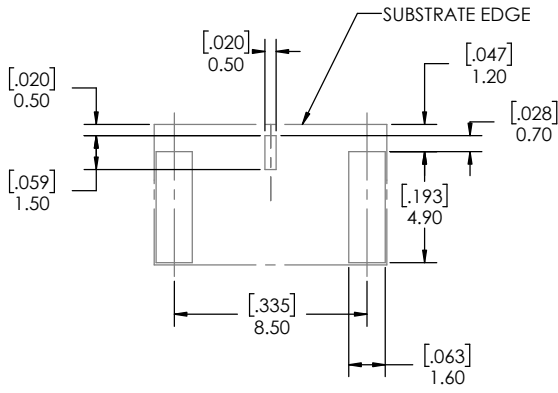
- NOTE(S):
1. These characteristics are typical and for reference.
 2. See sheet 2 for PCB interface definition.
 3. For questions please contact sales@amphenolcdi.com

MATERIAL(S):	ELECTRICAL(S):	MECHANICAL(S):	ENVIRONMENTAL(S):
Body: Brass Center Conductor: Beryllium Copper Insulator: Insulator 1: PCTFE, white Insulator 2: PTFE, white RoHS Compliant Protective Cap Soft PVC Color: Yellow	Impedence: 50 Ohms Nominal Frequency Range: DC to 40 GHz VSWR: 1.3:1 max at 40 GHz Working Voltage: 400 Vrms max @ Sea Level Dielectric Withstand Voltage: 500 Vrms max. Insulation Resistance: 5000 Megaohms min. Contact Resistance: Initial: Center Contact: 1.5 Milliohms max Outer Contact: 0.8 Milliohms max	Mating Characteristics: Interface per MIL-STD-348 Force to Engage & Disengage: Torque: 2 inch-pounds max Longitudinal Force: NA Connector Durability: 500 Cycles min. Permeability: Less than 2.0 mu. Center Contact Retention: Axial Force: 6 pounds min. Radial Force: NA	Temperature Range: -65°C to +165°C Moisture Resistance: MIL-STD-202, Method 103, Test Condition B Corrosion: MIL-STD-202, Method 101, Test Condition B Vibration: MIL-STD-202, Method 204, Test Condition A Shock: MIL-STD-202, Method 213, Test Condition 1

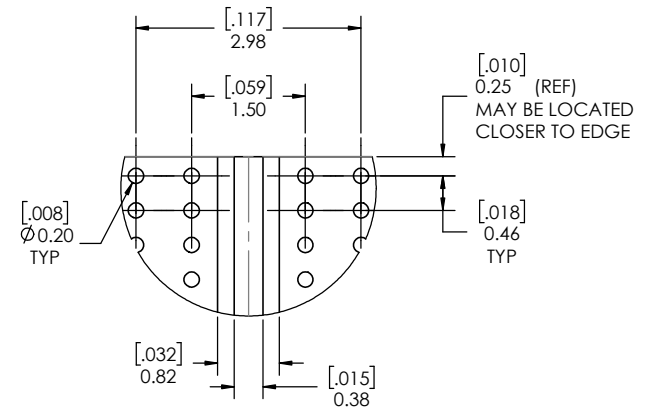
FINISH(ES):	Body: Gold Plating Center Conductor: Gold Plating	DIMENSIONS ARE IN MILLIMETERS [INCHES] ± TOLERANCES UNLESS OTHERWISE NOTED					THIRD ANGLE PROJECTION		Amphenol CDI				
		.X	.XX	.XXX	.XXXX	ANGLE			DESIGNER:	TITLE	SIZE	CAGE CODE	PART NUMBER
		0.3mm [.012"]	0.15mm [.006"]	0.050mm [.002"]	0.010mm [.0004"]	0.5				C	7M294	TMB-E9FS-1S1	3
		NEXT ASSY.		USED ON		APPLICATION							
THE INFORMATION CONTAINED HEREIN IS PROPRIETARY TO AMPHENOL, AND SHALL IN NO WAY BE REPRODUCED OR DISCLOSED IN WHOLE OR IN PART OR USED FOR ANY DESIGN OR MANUFACTURE EXCEPT WHEN SUCH USER POSSESSES DIRECT, WRITTEN AUTHORIZATION FROM AMPHENOL.													



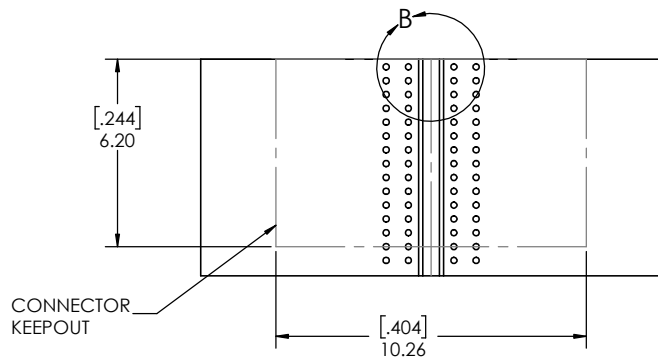
DETAIL B
SCALE 20 : 1



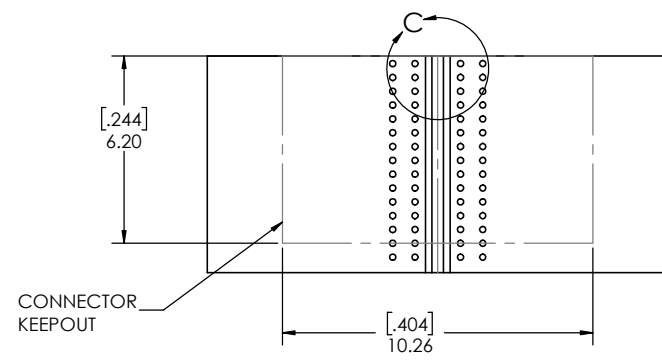
SOLDER PASTE STENCIL
SCALE 6:1



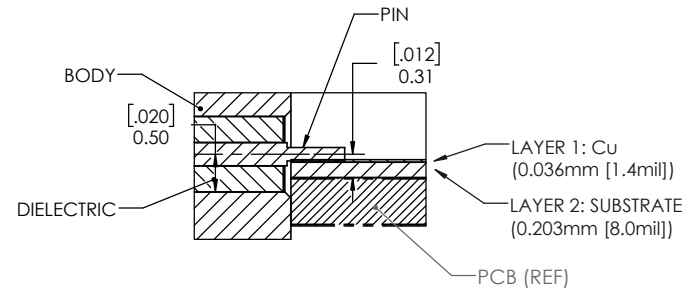
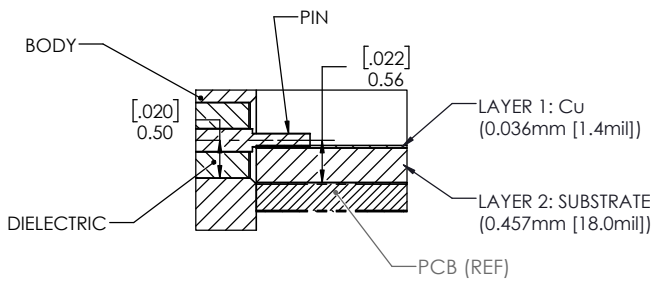
DETAIL C
SCALE 20 : 1



PCB LAYOUT OPTION 1
0.457mm [18.0mil] THICK SUBSTRATE (LAYER 2)



PCB LAYOUT OPTION 2
0.203mm [8.0mil] THICK SUBSTRATE (LAYER 2)



PCB LAYOUT (FOR REFERENCE ONLY)



2.92mm STRAIGHT JACK,
EDGE MOUNT (MANUAL
SOLDER)

SIZE C	CAGE CODE 7M294	PART NUMBER TMB-E9FS-1S1	REV 3
SCALE: 8:1		PART NUMBER: TMB-E9FS-1S1 2 OF 2	