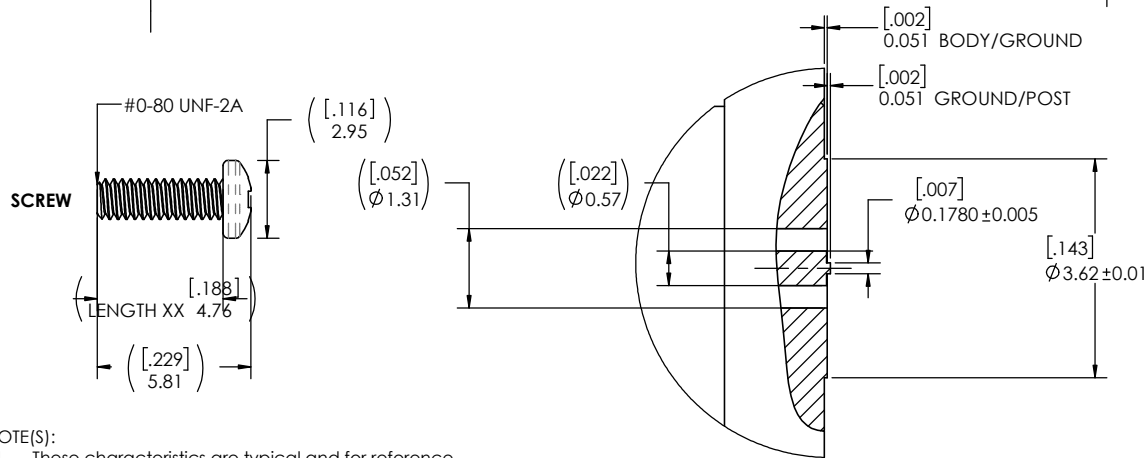
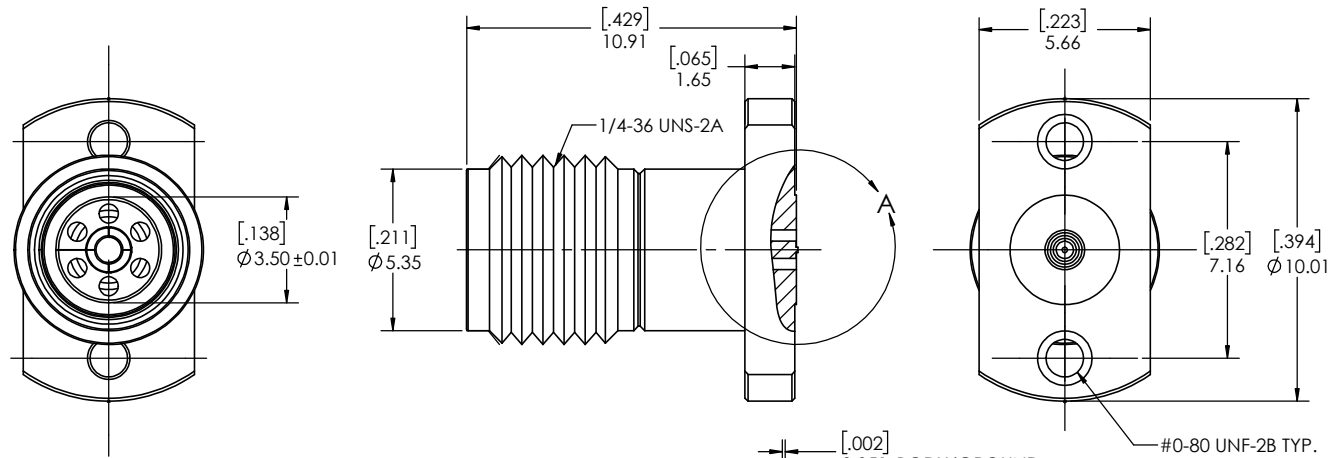
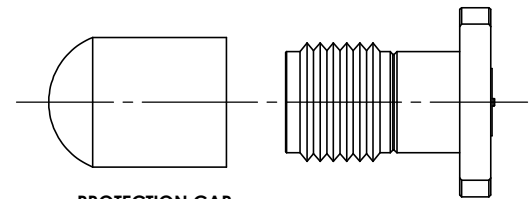
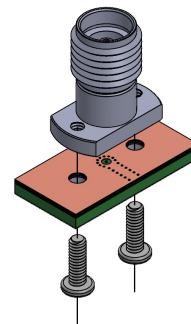
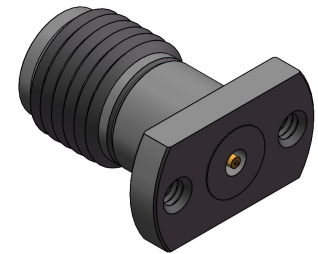


| REVISIONS | | | |
|-----------|----------------------------------|------------|----------|
| REV. | DESCRIPTION | DATE | APPROVED |
| - | INITIAL RELEASE | 11/21/2018 | DL |
| 1 | ADDED SHEET 2 PCB DEFINITION | 2/15/2019 | PV |
| 2 | UPD PCB (COMMON SL AND CPW) | 5/13/2019 | PV |
| 3 | CHANGED PN, WAS: TMB-V5F2-1L1 | 1/9/2020 | PV |
| 4 | UPADTE TO SHIOW VERSION G DESIGN | 2020/7/24 | FY |
| 5 | SCREW DIMENSION CHANGE TO REF | 2021/9/06 | FY |
| 6 | ADD MOUTING SREWS INFO TO TABLE | 2021/9/15 | JZ |



- NOTE(S):
1. These characteristics are typical and for reference.
 2. See sheet 2 for PCB interface definition.
 3. For questions please contact sales@amphenolcdi.com

DETAIL A
SCALE 16 : 1



| MATERIAL(S): | ELECTRICAL(S): | MECHANICAL(S): | ENVIRONMENTAL(S): |
|--|--|---|--|
| Body: Stainless Steel Center Conductor: Beryllium Copper Insulator: PCTFE, white RoHS Compliant Protective Cap: Soft PVC Color: White Mounting Screws: Stainless Steel | Impedence: 50 Ohms Nominal Frequency Range: DC to 34 GHz VSWR: 1.25 max at 34 GHz Working Voltage: 500 V RMS max @ Sea Level Dielectric Withstand Voltage: 1000 V RMS max. Insulation Resistance: 5000 Megaohms min. Contact Resistance: Initial: Center Contact: 3 Milliohms max Outer Contact: 2 Milliohms max Insertion Loss: <0.35 db @ 34 GHz | Mating Characteristics: Interface per MIL-STD-348 Force to Engage & Disengage: Torque: 2 inch-pounds max Longitudinal Force: NA Connector Durability: 500 Cycles min. Permeability: Less than 2.0 mu. Center Contact Retention: Axial Force: 6 pounds min. Radial Force: NA | Temperature Range: -65°C to +165°C Moisture Resistance: MIL-STD-202, Method 103, Test Condition B Corrosion: MIL-STD-202, Method 101, Test Condition B Vibration: MIL-STD-202, Method 204, Test Condition A Shock: MIL-STD-202, Method 213, Test Condition 1 |
| FINISH(ES): | | | |

Body: Passivated
 Center Conductor: Gold Plating
 Mounting Screws: Passivated

| DIMENSIONS ARE IN MILLIMETERS [INCHES] ± TOLERANCES UNLESS OTHERWISE NOTED | | | | |
|---|-------------------|--------------------|---------------------|-------|
| .X | .XX | .XXX | .XXXX | ANGLE |
| 0.3mm [.012"] | 0.15mm [.006"] | 0.050mm [.002"] | 0.010mm [.0004"] | 0.5 |
| NEXT ASSY. | | USED ON | | |
| APPLICATION | | | | |

| THIRD ANGLE PROJECTION | |
|-------------------------------|---------------------------------|
| DESIGNER: X XXXXXX XXX/XX/XXX | DESIGNED BY: X XXXXXX XX/XX/XXX |
| PRODUCT: | QUALITY: |
| MFG: | |

Amphenol CDi

TITLE: 3.50mm FEMALE 2 HOLE FLANGE POST CONTACT

| | | | |
|------------|------------------|-----------------------------|--------|
| SIZE: C | CAGE CODE: 7M294 | PART NUMBER: TMB-V5F2-3L1 | REV: 6 |
| SCALE: 8:1 | | DO NOT SCALE DRAWING 1 OF 2 | |

THE INFORMATION CONTAINED HEREIN IS PROPRIETARY TO AMPHENOL, AND SHALL IN NO WAY BE REPRODUCED OR DISCLOSED IN WHOLE OR IN PART OR USED FOR ANY DESIGN OR MANUFACTURE EXCEPT WHEN SUCH USER POSSESSES DIRECT, WRITTEN AUTHORIZATION FROM AMPHENOL.



