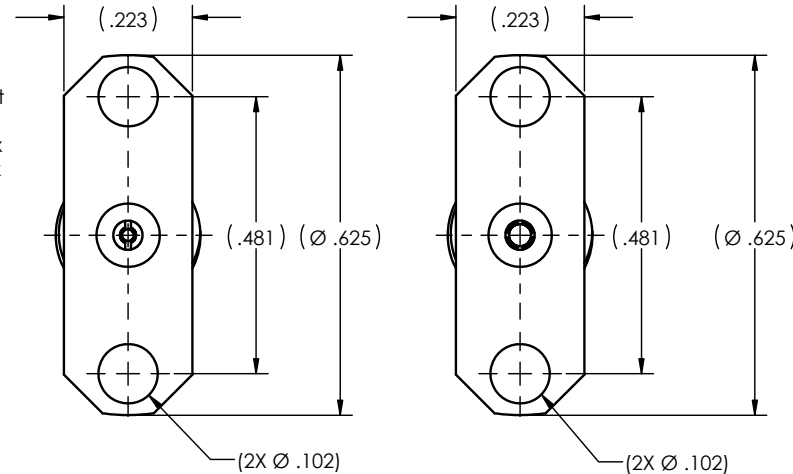
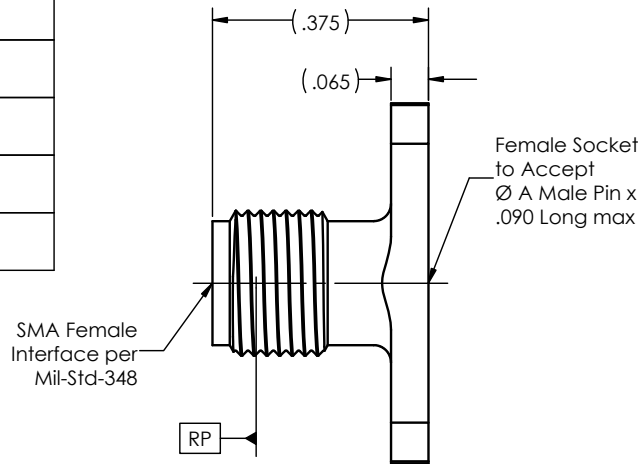


PART NO.	Ø A	FIGURE(S)
-1CC	.0360±.0005	1
-1CCSF		
-2CC	.0200±.0005	2
-2CCSF		
-3CC	.0100±.0005	2
-3CCSF		
-4CC	.0120±.0005	2
-4CCSF		
-5CC	.0150±.0005	2
-5CCSF		
-6CC	.0180±.0005	2
-6CCSF		



REVISION HISTORY				
ECO	REV.	DESCRIPTION	DRAWN BY	DATE
	B	ECO 14085	AGS	01/16/2002
	C	ECO 22086	DKN	03/25/2009
204093	D	REDRAW WITH CHANGE	DKN	7/21/2025



**MATERIAL(S):**

Body:  
303 SST per ASTM A582  
Center Conductor:  
BeCu Alloy per ASTM B196  
Dielectric:  
PTFE Teflon per ASTM D1710

**ELECTRICAL(S):**

Impedance: 50 Ohms Nominal  
Frequency Range: DC to 26.0 GHz  
VSWR: 1.55:1 max @ 26GHz  
Insertion Loss: .30 dB max @ 26.0GHz  
Working Voltage: 335 Vrms max @ Sea Level  
Dielectric Withstand Voltage: 1.000 Vrms min.  
RF HiPot Voltage: 670 Vrms min. @ 5MHz  
Corona Level: 250 Vrms @ 70,000 ft  
Insulation Resistance: 5,000 MegOhms min.  
RF Leakage: -(90 - fGHz) dB.  
Contact Resistance:  
Initial:  
Center Contact: 6.0 Milliohms max  
Outer Contact: 2.0 Milliohms max  
After Environment:  
Center Contact: 8.0 Milliohms max  
Outer Contact: NA

**MECHANICAL(S):**

Mating Characteristics:  
Interface per MIL-STD-348  
Force to Engage & Disengage:  
Torque: 2 inch-lbs max  
Longitudinal Force: NA  
Center Contact Retention:  
Axial Force: 6 lbs min.  
Connector Durability:  
500 Cycles min. @ 12 cycles/minute max  
Permeability: Less than 2.0 mu.

**ENVIROMENTAL(S):**

Temperature Range: -65°C to +165°C  
Thermal Shock:  
MIL-STD-202, Method 107, Test Condition A  
Moisture Resistance:  
MIL-STD-202, Method 106, except step 7b shall be obmited. Insulation resistance at least 1000 MegOhms within 5 minutes after removal from humidity.  
Corrosion:  
MIL-STD-202, Method 101, Test Condition B  
Vibration:  
MIL-STD-202, Method 204, Test Condition D  
Shock:  
MIL-STD-202, Method 213, Test Condition I

**FINISH(ES):**

Body:  
(for CCSF): Passivate per ASTM A967 or SAE AMS 2700.  
(for CC): Gold plate per ASTM B488, Type II, Code C, Class 0.25, over nickel under plate per SAE AMS-QQ-N-290, Class 1.  
Center Conductor:  
Gold plate per ASTM B488, Type II, Code C or D, Class 1.25, over nickel under plate per SAE AMS-QQ-N-290, Class 1.

**TOLERANCES AND NOTES**

- EXCEPT AS NOTED DIMENSIONS ARE IN INCHES.  
LINEAR .XX ±.015 / .XXX ±.005  
FRACTION ± 1/32 ANGULAR ± 1/2°  
1. INTERPRET DRAWING PER ASME Y14.5 - 2018  
2. MACHINE FINISH: 63 RMS  
3. BREAK ALL SHARP EDGES .003 MAX.  
4. MACHINED FILLETS .005 MAX.  
5. MACHINED SURFACES SQUARE TO RESPECTIVE AXIS WITHIN .005 INCHES PER INCH.  
6. MACHINED DIAMETERS CONCENTRIC WITHIN .002 T.I.R.  
7. DIMENSIONS TO BE MET AFTER PLATING.  
8. CHAMFER ALL THREADS 45°.  
9. THREADS PER H-28  
10. REMOVE FRAYED EDGES ON TEFLON.  
11. REMOVE ALL BURRS.

**APPLICABLE Amphenol CDI DOCUMENTS**

WORK STANDARD	PROD INSTRUC	ASSY INSTRUC
NA	NA	NA

THE INFORMATION CONTAINED HEREIN IS PROPRIETARY TO AMPHENOL AND SHALL IN NO WAY BE REPRODUCED OR DISCLOSED IN WHOLE OR IN PART OR USED FOR ANY DESIGN OR MANUFACTURE EXCEPT WHEN SUCH USER POSSESSES DIRECT, WRITTEN AUTHORIZATION FROM AMPHENOL.

MATERIAL			SPECIFICATION		PROCUREMENT	
APPROVAL	INITIALS	DATE	TITLE		SCALE	
DRAWN BY	BRD	08/10/1995	SMA FEMALE 4 HOLE FLANGE MOUNT		6:1	
CHECKED BY	-	-	FIELD REPLACEABLE (AIR SECTION DESGN)		SUB-DIRECTORY/	
TEST ENG	-	-	OUTLINE/		SHEET 1 OF 1	
QUALITY	-	-	DRAWING NO.		REV. D	
DESIGN ENG	DNg	03/25/2009	C 30990		OL 5681	
MFG ENG	-	-	DRAWING NO.		REV. D	
ECO APPRV	DNg	07/22/2025	C 30990		OL 5681	

Amphenol CDI 12900 Alondra Blvd. Cerritos, CA 90703