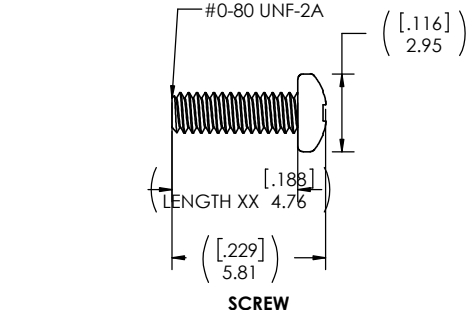
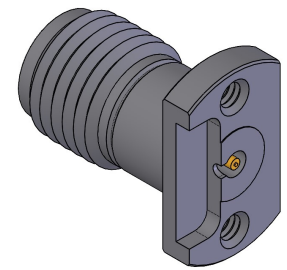
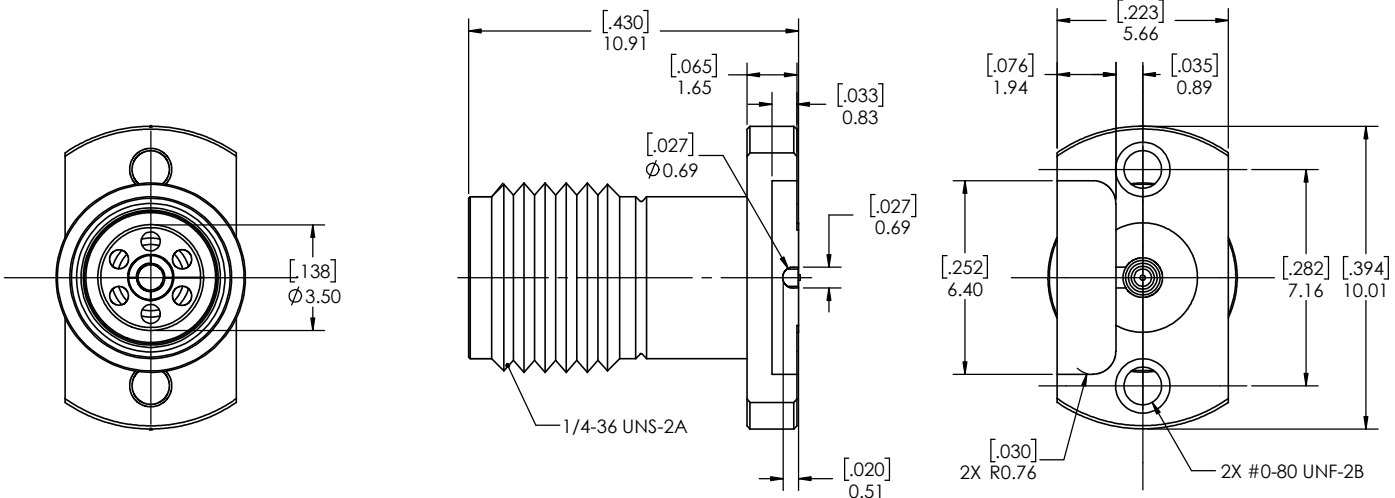
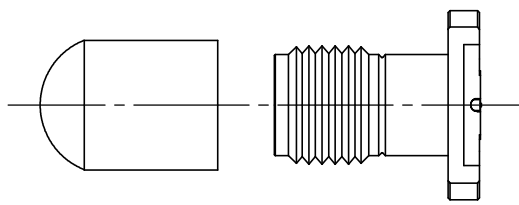
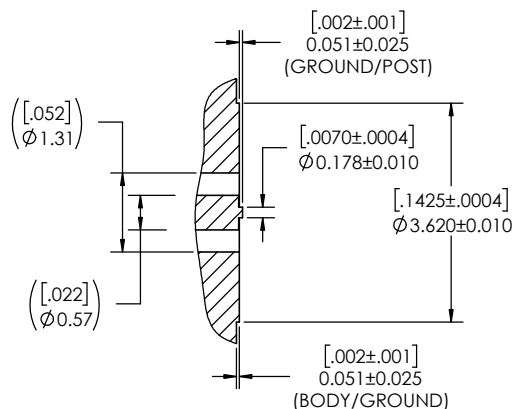


REVISIONS			
REV.	DESCRIPTION	DATE	APPROVED
0	INITIAL RELEASE	5/1/2019	PV
1	UPD PCB (COMMON SL AND CPW)	5/13/2019	PV
2	CHANGED P/N ,WAS TMB-V5F2-1L1C	1/9/2020	PV
3	UPDATED TO 28-2X026-44050B	2/3/2020	PV
4	UPDATED TO 28-2X026-44050D	8/11/2020	FY
5	ADD MOUNTING SREWS INFO TO TABLE	9/15/2021	JZ



SCREW



PROTECTION CAP

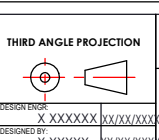
NOTE(S):
 1. These characteristics are typical and for reference..
 2. See sheet 2 for PCB interface definition.
 3. For questions please contact sales@amphenolcdi.com

MATERIAL(S) :	ELECTRICAL(S) :	MECHANICAL(S) :	ENVIRONMENTAL(S) :
Body: Stainless Steel Center Conductor: Beryllium Copper Insulator: PCTFE, white RoHS Compliant Protective Cap: Soft PVC Color: White Mounting Screws: Stainless Steel	Impedence: 50 Ohms Nominal Frequency Range: DC to 34 GHz VSWR: 1.30 max at 34 GHz Working Voltage: 500 V RMS max @ Sea Level Dielectric Withstand Voltage: 1000 V RMS max. Insulation Resistance: 5000 Megaohms min. Contact Resistance: Initial: Center Contact: 3 Milliohms max Outer Contact: 2 Milliohms max Insertion Loss: <0.35 db @ 34 GHz	Mating Characteristics: Interface per MIL-STD-348 Force to Engage & Disengage: Torque: 2 inch-pounds max Longitudinal Force: NA Connector Durability: 500 Cycles min. Permeability: Less than 2.0 mu. Center Contact Retention: Axial Force: 6 pounds min. Radial Force: NA	Temperature Range: -65°C to +165°C Moisture Resistance: MIL-STD-202, Method 103, Test Condition B Corrosion: MIL-STD-202, Method 101, Test Condition B Vibration: MIL-STD-202, Method 204, Test Condition A Shock: MIL-STD-202, Method 213, Test Condition 1

FINISH(ES) :

Body:
 Passivated
 Center Conductor:
 Gold Plating
 Mounting Screws:
 Passivated

DIMENSIONS ARE IN MILLIMETERS [INCHES] ± TOLERANCES UNLESS OTHERWISE NOTED				
.X	.XX	.XXX	.XXXX	ANGLE
0.3mm [.012"]	0.15mm [.006"]	0.050mm [.002"]	0.010mm [.0004"]	0.5



Amphenol CDi

TITLE: 3.50mm FEMALE 2 HOLE FLANGE POST CONTACT, CPW

DESIGNER: X XXXXXX XX/XX/XXX
 DESIGNED BY: X XXXXXX XX/XX/XXX

PRODUCT: []
 QUALITY: []
 MFG: []

SIZE: C
 CAGE CODE: 7M294
 PART NUMBER: TMB-V5F2-3LC
 REV: 5

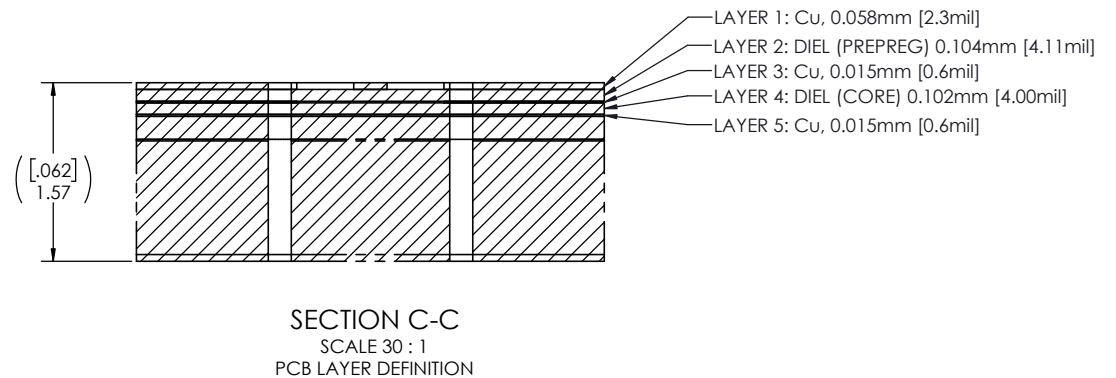
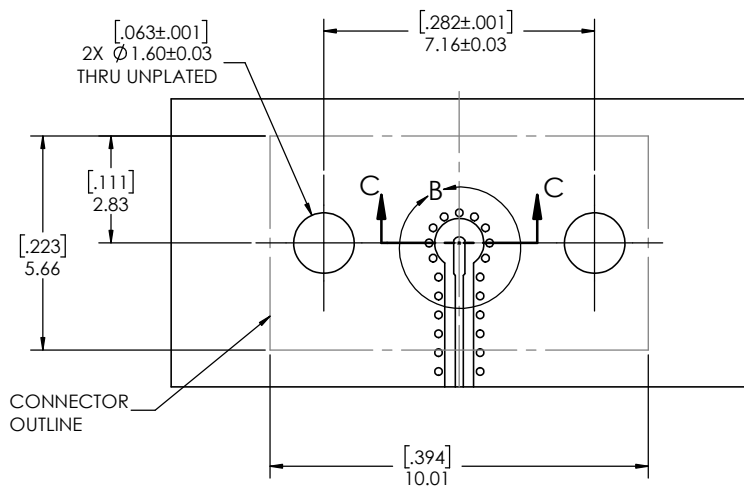
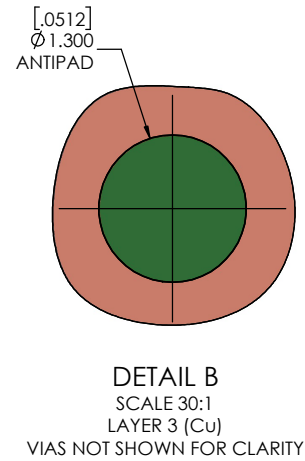
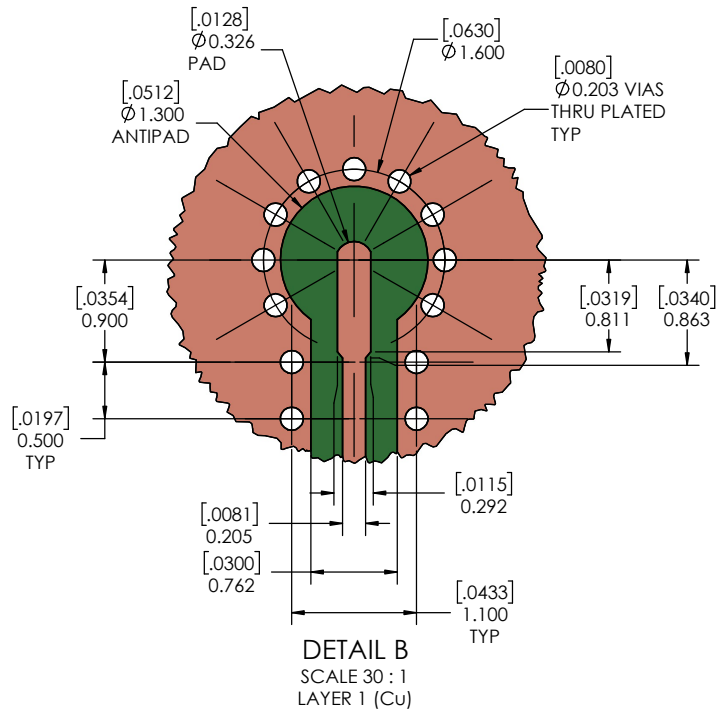
SCALE: 8:1
 DO NOT SCALE DRAWING

THE INFORMATION CONTAINED HEREIN IS PROPRIETARY TO AMPHENOL, AND SHALL IN NO WAY BE REPRODUCED OR DISCLOSED IN WHOLE OR IN PART OR USED FOR ANY DESIGN OR MANUFACTURE EXCEPT WHEN SUCH USER POSSESSES DIRECT, WRITTEN AUTHORIZATION FROM AMPHENOL.



NEXT ASSY.	USED ON
APPLICATION	

SCALE: 8:1	DO NOT SCALE DRAWING	1 OF 2
------------	----------------------	--------



3.50mm FEMALE 2 HOLE
FLANGE POST CONTACT,
CPW

SIZE	CAGE CODE	PART NUMBER	REV
C	7M294	TMB-V5F2-3LC	5
SCALE: 10:1		PART NUMBER: TMB-V5F2-3LC	2 OF 2